

Contents

- 1 - Landscape Plan
- 2 - Prairie Gardens
- 3 - Woodland Gardens
- 4 - Layered Habitat
- 5 - Design Strategies
- 6 - Native Plants

This design guide begins by showing you a planting plan for a beautiful garden with healthy habitat. Detailed plans show sunny (prairie), shady (woodland) and bird-friendly layered gardens, followed by the design strategies that can guide planning for your unique site. The final page contains pictures of many of the native plants used in this plan and work well in a residential garden setting.

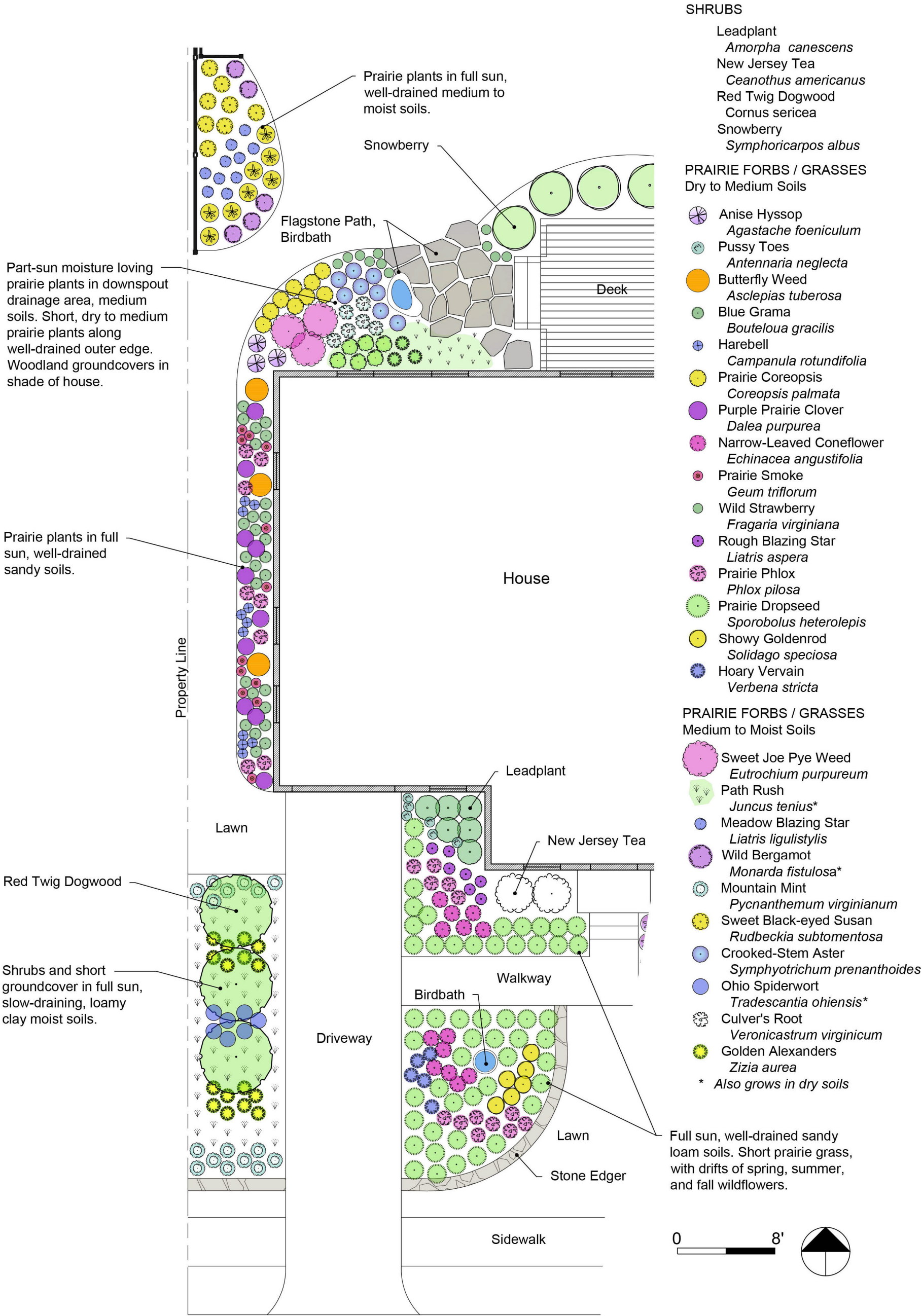
Design Overview

This design works with nature. Plants are selected to thrive in the site conditions and on their ability to regenerate and cover the ground. The landscape structure is designed to reduce maintenance of weeds, while creating habitat.

Layout decisions and plant selection anticipate natural processes shaping the garden. Ultimately, the success of the design rests with the management of the garden. Management is a continuation of design, as it guides the development and adapts to the dynamic nature of the garden.







SHRUBS

- Leadplant  
*Amorpha canescens*
- New Jersey Tea  
*Ceanothus americanus*
- Red Twig Dogwood  
*Cornus sericea*
- Snowberry  
*Symphoricarpos albus*

PRAIRIE FORBS / GRASSES  
Dry to Medium Soils

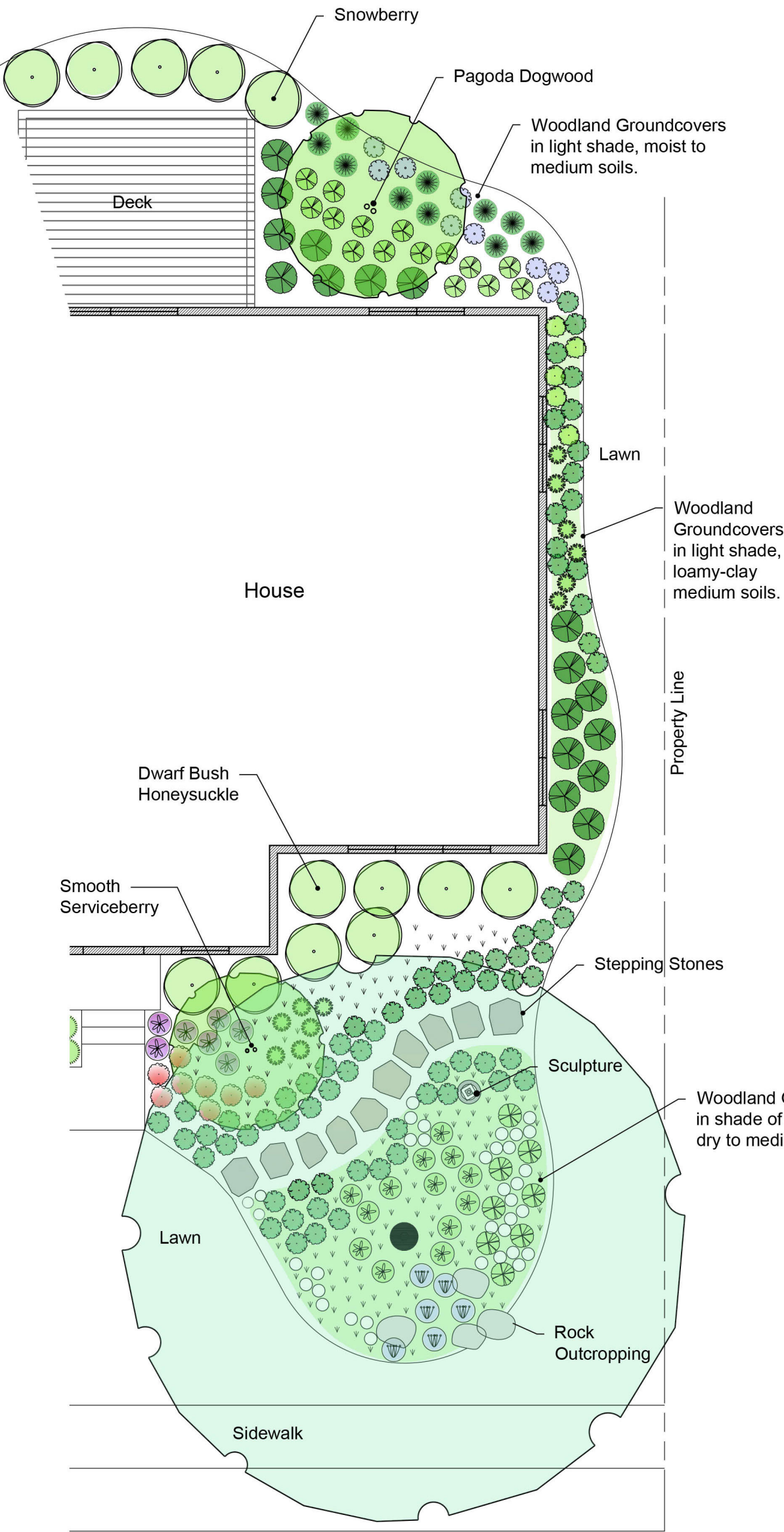
- Anise Hyssop  
*Agastache foeniculum*
- Pussy Toes  
*Antennaria neglecta*
- Butterfly Weed  
*Asclepias tuberosa*
- Blue Grama  
*Bouteloua gracilis*
- Harebell  
*Campanula rotundifolia*
- Prairie Coreopsis  
*Coreopsis palmata*
- Purple Prairie Clover  
*Dalea purpurea*
- Narrow-Leaved Coneflower  
*Echinacea angustifolia*
- Prairie Smoke  
*Geum triflorum*
- Wild Strawberry  
*Fragaria virginiana*
- Rough Blazing Star  
*Liatris aspera*
- Prairie Phlox  
*Phlox pilosa*
- Prairie Dropseed  
*Sporobolus heterolepis*
- Showy Goldenrod  
*Solidago speciosa*
- Hoary Vervain  
*Verbena stricta*

PRAIRIE FORBS / GRASSES  
Medium to Moist Soils

- Sweet Joe Pye Weed  
*Eutrochium purpureum*
- Path Rush  
*Juncus tenuis\**
- Meadow Blazing Star  
*Liatris ligulistylis*
- Wild Bergamot  
*Monarda fistulosa\**
- Mountain Mint  
*Pycnanthemum virginianum*
- Sweet Black-eyed Susan  
*Rudbeckia subtomentosa*
- Crooked-Stem Aster  
*Symphyotrichum prenanthoides*
- Ohio Spiderwort  
*Tradescantia ohiensis\**
- Culver's Root  
*Veronicastrum virginicum*
- Golden Alexanders  
*Zizia aurea*
- \* Also grows in dry soils







TREES

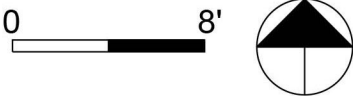
- Smooth Serviceberry
- Amelanchier laevis*
- Pagoda Dogwood
- Cornus alternifolia*

SHRUBS

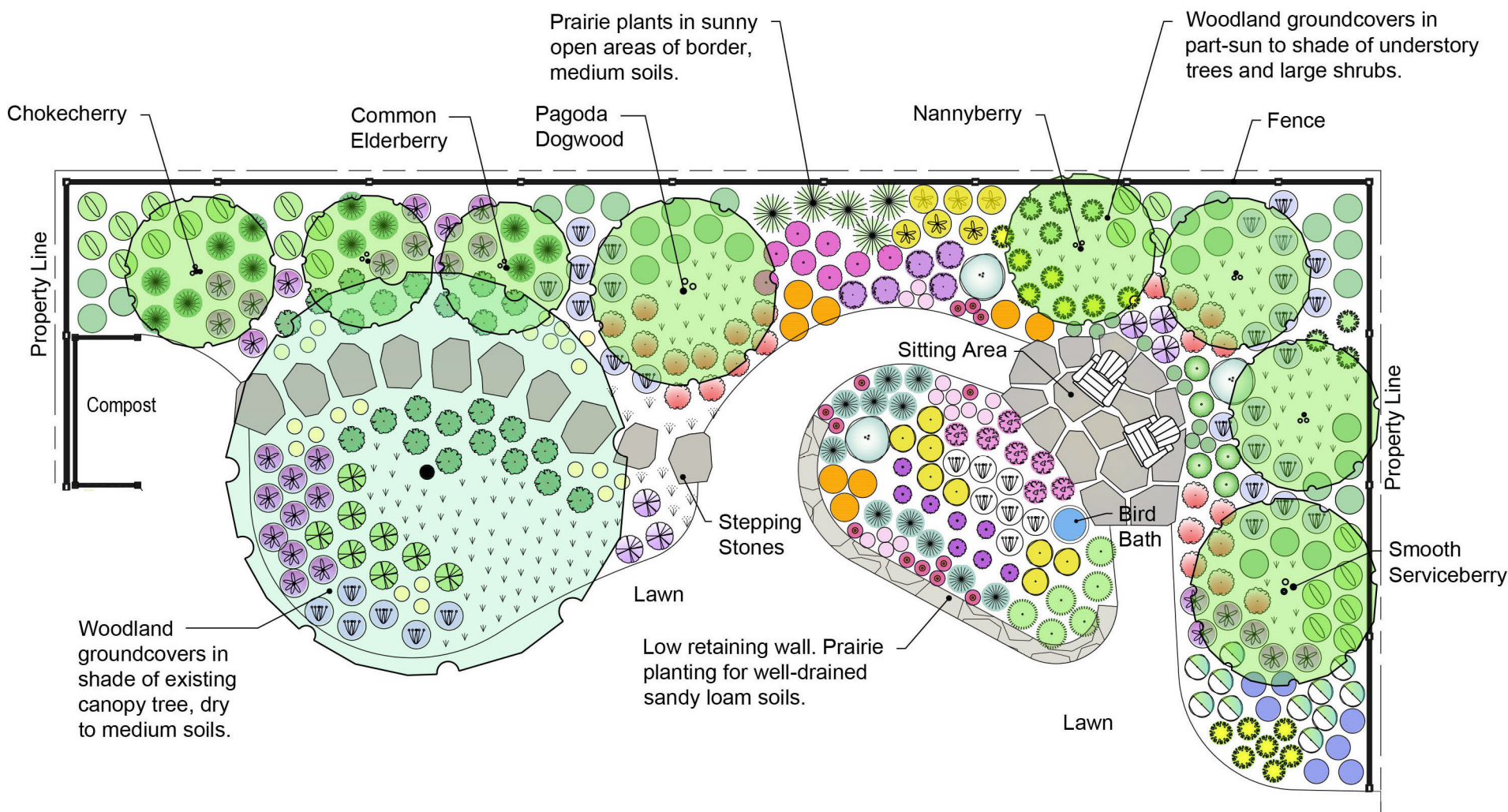
- Dwarf Bush honeysuckle
- Diervilla lonicera*
- Snowberry
- Symphoricarpos albus*

FORBS / SEDGES / FERNS

- Wild Columbine
- Aquilegia canadensis*
- Wild Ginger
- Asarum canadensis*
- Lady Fern
- Athyrium filix-femina*
- Pennsylvania Sedge
- Carex pennsylvanica*
- Wild Geranium
- Geranium maculatum*
- Virginia Bluebell's
- Mertensia virginica*
- Solomon's Seal
- Polygonatum biflorum*
- Mayapple
- Podophyllum peltatum*
- Interrupted Fern
- Osmunda claytoniana*
- Bloodroot
- Sanguinaria canadensis*
- Heart-Leaved Aster
- Symphytrichum cordifolium*
- Early Meadow Rue
- Thalictrum dioicum*







PRAIRIE FORBS / GRASSES

- Anise Hyssop  
*Agastache foeniculum*
- Nodding Onion  
*Allium cernuum*
- Tall Thimbleweed  
*Anemone virginiana*
- Butterfly Weed  
*Asclepias tuberosa*
- White False Indigo  
*Baptisia alba*
- Purple Coneflower  
*Echinacea purpurea*
- Rattlesnake Master  
*Eryngium yuccifolium*
- Wild Strawberry  
*Fragaria virginiana*
- Prairie Smoke  
*Geum triflorum*
- Path Rush  
*Juncus tenuis*
- Rough Blazing Star  
*Liatris aspera*
- Wild Bergamot  
*Monarda fistulosa*
- Smooth Penstemon  
*Penstemon digitalis*
- Prairie Phlox  
*Phlox pilosa*
- Yellow Coneflower  
*Ratibida pinnata*
- Little Bluestem  
*Schizachyrium scoparium*
- Showy Goldenrod  
*Solidago speciosa*
- Indian Grass  
*Sorghastrum nutans*
- Prairie Dropseed  
*Sporogolus heterolepis*
- Ohio Spiderwort  
*Tradescantia ohiensis*
- Culver's Root  
*Veronicastrum virginicum*
- Golden Alexanders  
*Zizia aurea*

WOODLAND FORBS / SEDGES / FERNS

- Wild Columbine  
*Aquilegia canadensis*
- Wild Ginger  
*Asarum canadense*
- Lady Fern  
*Athyrium filix-femina*
- Pennsylvania Sedge  
*Carex pennsylvanica*
- Springel's Sedge  
*Carex springelii*
- Big Leaf Aster  
*Eurybia macrophyllus*
- Wild Geranium  
*Geranium maculatum*
- Solomon's Seal  
*Polygonatum biflorum*
- Zig-Zag Goldenrod  
*Solidago flexicaulis*
- Heart-Leaved Aster  
*Symphytrichum cordifolium*
- Bellwort  
*Uvularia grandiflora*

TREES / LARGE SHRUBS

- Smooth Serviceberry  
*Amelanchier laevis*
- Pagoda Dogwood  
*Cornus alternifolia*
- Chokecherry  
*Prunus virginiana*
- Common Elderberry  
*Sambucus canadensis*
- Nannyberry  
*Viburnum lentago*

0 8'





These design strategies guided the layout and plant selection illustrated in this plan set. Though your yard will be different, these strategies can help you create an ecological garden adapted to your site.

MATCH PLANTS TO SITE CONDITIONS

Identify site conditions – light, moisture, soil type, drainage patterns, microclimates, etc. Match the unique qualities of native plant communities (prairie, oak savanna, woodland) with the site conditions and use as a model to develop plant selection.



Native to upland deciduous woods, Pennsylvania sedge is used in this garden as a groundcover in the shade of trees.

MAKE IT ATTRACTIVE

Add visual appeal to the biodiverse garden by adding order, neatness and familiarity.



A garden frames open space creating an outdoor room.



A low wall or a mowed edge adds neatness to biodiversity.



Colorful blooming flowers are familiar and loved.

CREATE HABITAT

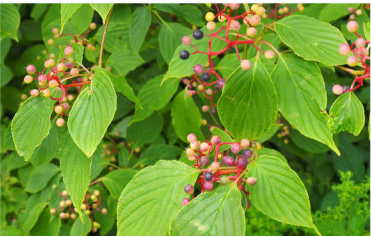
Increase habitat richness by creating a layered landscape of native trees, shrubs, and groundcovers.

A layered landscape provides food and shelter for birds.

Provide pollinators with host plants and continuous blooms from spring to fall.

Let leaves and other plant debris collect on the woodland floor as mulch to build soil and retain moisture, as well as a place where birds can forage and insects can overwinter.

Leave seed heads standing overwinter for the birds. Cut back prairie vegetation in late spring to give overwintering insects time to leave their nests.



DESIGN FOR EASE OF MANAGEMENT

Bare mulch is an invitation for weeds – develop a dense, continuous groundcover that fills the open space between and under plants.

Consider a plants ability to colonize – match a plants ability to spread by root or seed dispersal with the size and goals of a garden area.

Discourage one plant from taking over a bed by combining plants with similar competitive levels.

Plan for succession – combine short-lived plants that are quick to grow and fill a space, with long-lived plants that are slow to establish and fill in.



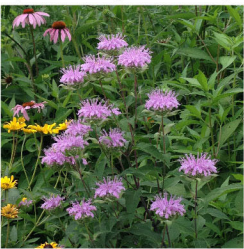
A dense groundcover layer discourages weed growth.



Prairie/Savanna (Sun to part-sun, Medium to Moist Soils)



Yellow Coneflower \*  
*Ratibida pinnata*



Wild Bergamot \*  
*Monarda fistulosa*



Indian Grass \*  
*Sorghastrum nutans*



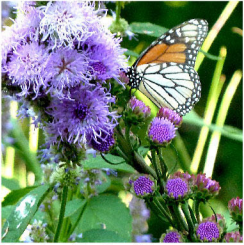
Ohio Spiderwort \*  
*Tradescantia ohiensis*



Golden Alexanders  
*Zizia aurea*



Mountain Mint  
*Pycnanthemum virginianum*



Meadow Blazing Star  
*Liatris ligulistylis*



Culver's Root  
*Veronicastrum virginicum*



Sweet Black-eyed Susan  
*Rudbeckia subtomentosa*



Sweet Joe-pye Weed \*\*  
*Eutrochium purpureum*



Nodding Onion  
*Allium cernuum*



White False Indigo  
*Baptisia alba*

\* Also grows in dry soils.

\*\* Also grows in shade.

Prairie/Savanna (Sun to part-sun, Medium to Dry Soils)



Leadplant  
*Amorpha canescens*



New Jersey Tea  
*Ceanothus americanus*



Butterfly Weed  
*Asclepias tuberosa*



Little Bluestem  
*Schizachyrium scoparium*



Hoary Vervain  
*Verbena stricta*



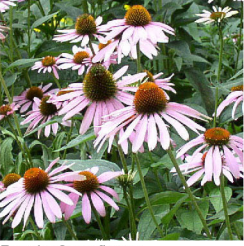
Showy Goldenrod  
*Solidago speciosa*



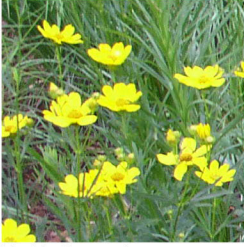
Prairie Phlox  
*Phlox pilosa*



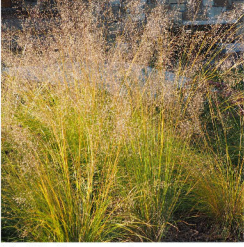
Purple Prairie Clover  
*Dalea purpurea*



Purple Coneflower  
*Echinacea purpurea*



Prairie Coreopsis  
*Coreopsis palmata*



Prairie Dropseed  
*Sporobolus heterolepis*



Tall Thimbleweed  
*Anemone virginiana*



Blue Grama  
*Bouteloua gracilis*

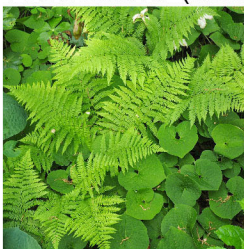


Anise Hyssop  
*Agastache foeniculum*



Rattlesnake Master (full sun only)  
*Eryngium yuccifolium*

Woodland (Shade to Light Shade, Medium to Moist Soils)



Lady Fern  
*Athyrium filix-femina*



Sprengel's Sedge \*  
*Carex springelii*



Virginia Bluebell's  
*Mertensia virginica*



Bloodroot  
*Sanguinaria canadensis*



Solomon's Seal  
*Polygonatum biflorum*



Interrupted Fern  
*Osmunda claytoniana*

\* Also grows in dry soils.

Woodland (Shade to Light Shade, Dry to Medium Soils)



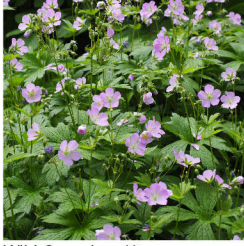
Early Meadow Rue  
*Thalictrum diocum*



Wild Ginger (shade only)  
*Asarum canadensis*



Wild Columbine \*\*  
*Aquilegia canadensis*



Wild Geranium \*\*  
*Geranium maculatum*



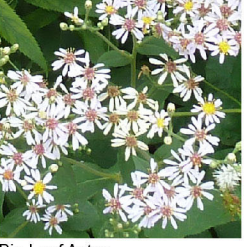
Mayapple  
*Podophyllum peltatum*



Pennsylvania Sedge  
*Carex pennsylvanica*



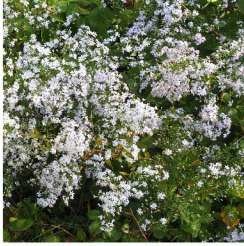
Bellwort  
*Uvularia grandiflora*



Big Leaf Aster  
*Eurybia macrophyllus*



Dwarf Bush Honeysuckle \*\*  
*Diervilla lonicera*



Heart-leaved Aster  
*Symphytrichum cordifolium*



Zig-zag Goldenrod  
*Soildago flexicaulis*



Zig-zag Goldenrod  
*Soildago flexicaulis*

\*\* Also grows in sun.

Understory Trees / Large Shrubs



Red Twig Dogwood  
*Cornus sericea*



Chokecherry  
*Prunus virginiana*



Smooth Serviceberry  
*Amelanchier laevis*



Pagoda Dogwood  
*Cornus alternifolia*



Common Elderberry  
*Sambucus canadensis*