

LAKEHOUSE

GRAND RAPIDS, MICHIGAN

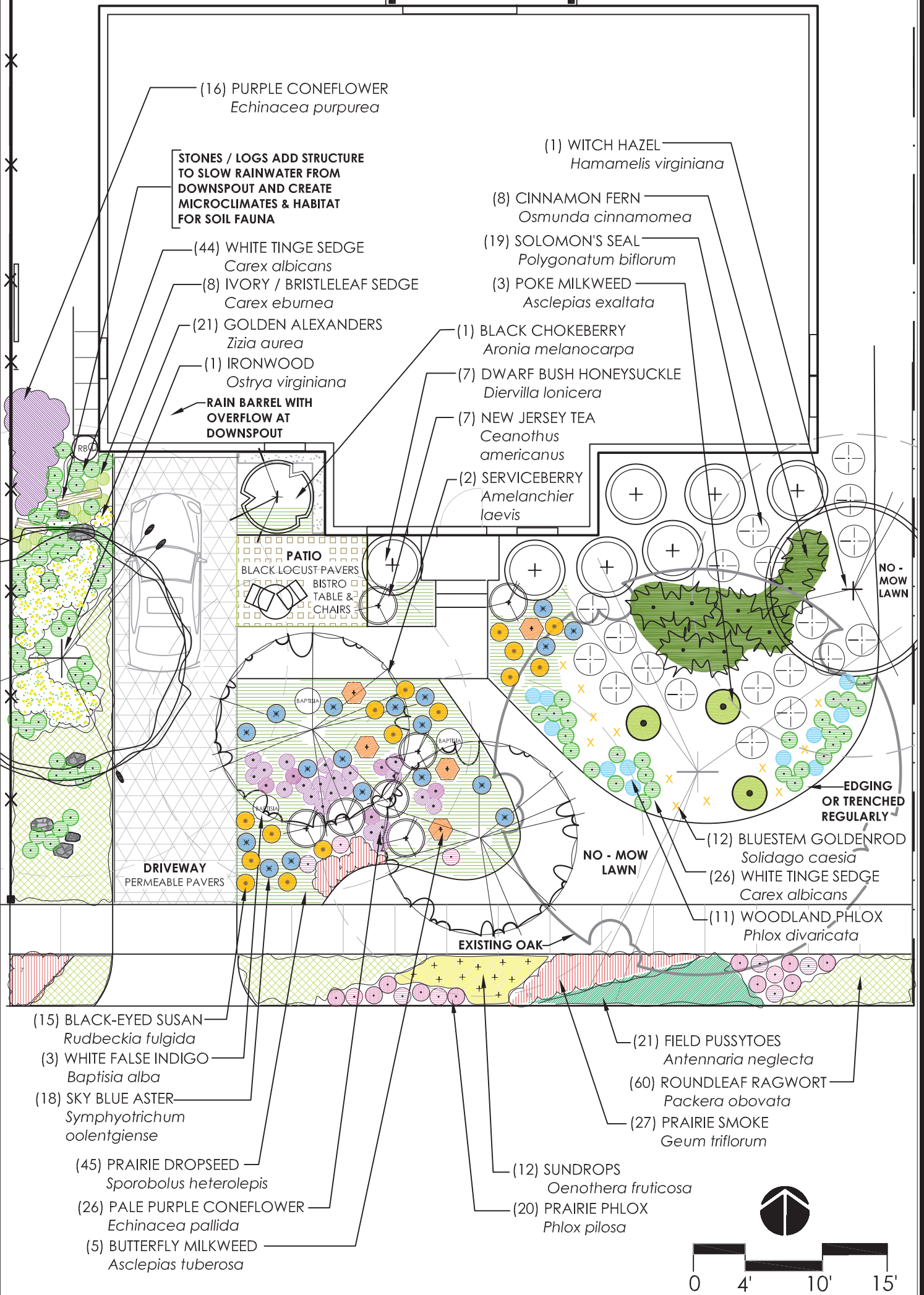
LANDSCAPE PLAN OVERALL

The Living
Garden



Wild Ones, River City-Grand Rapids Chapter

SEE PLANTING PLAN - BACK



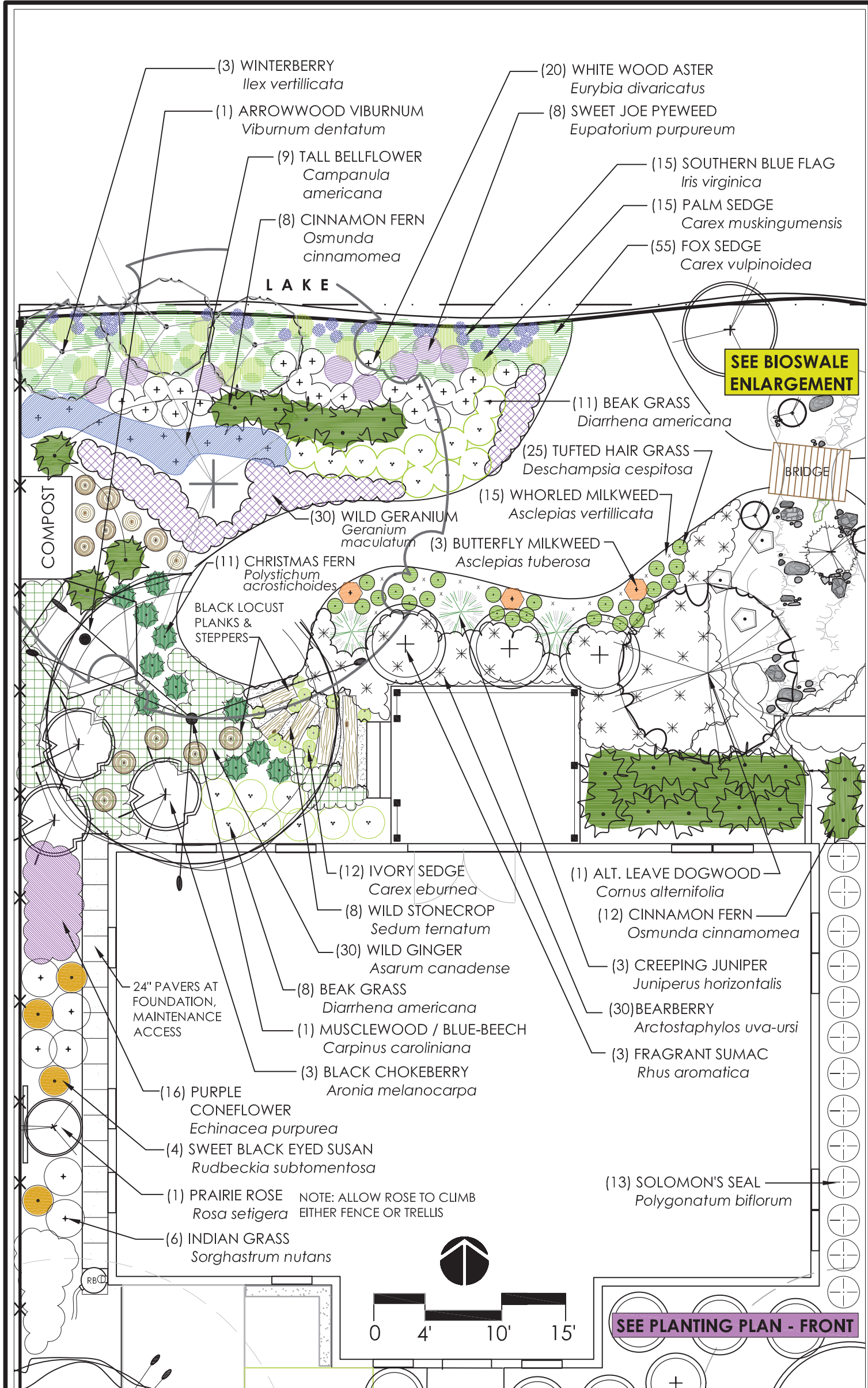
LAKEHOUSE
GRAND RAPIDS, MICHIGAN

PLANTING PLAN - FRONT

The Living
Garden



Wild Ones, River City-Grand Rapids Chapter



LAKEHOUSE

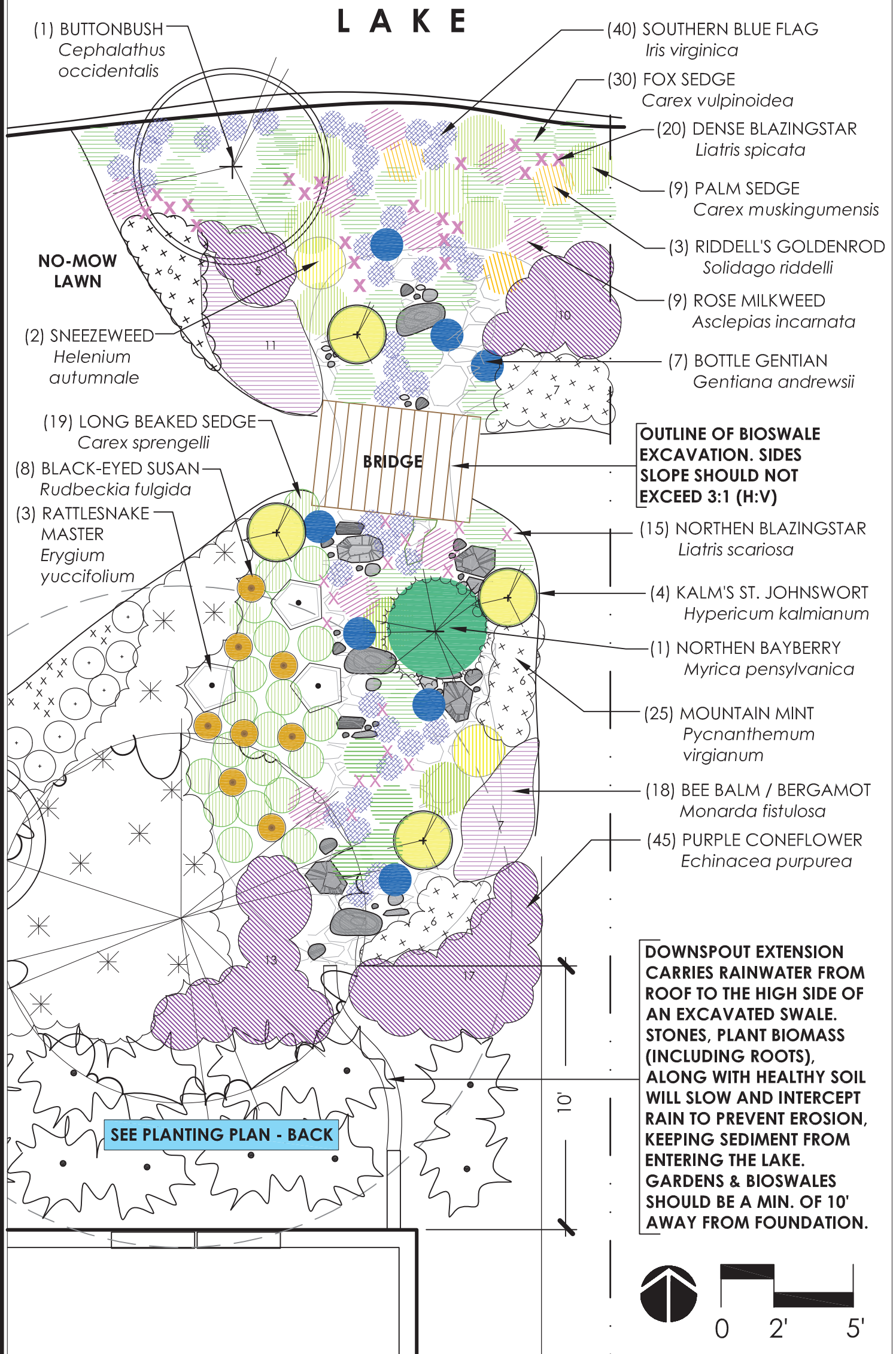
GRAND RAPIDS, MICHIGAN

PLANTING PLAN - BACK

The Living
Garden



Wild Ones, River City-Grand Rapids Chapter



LAKEHOUSE

GRAND RAPIDS, MICHIGAN

BIOSWALE ENLARGEMENT

The Living
Garden



Wild Ones, River City-Grand Rapids Chapter

LAKEHOUSE PLANT LIST

GRAND RAPIDS, MI

TREES & SHRUBS

BOTANICAL NAME	COMMON NAME	QTY	SIZE	NOTES: see references for more larval host plant (LHP) info.
<i>Amelanchier laevis</i>	SERVICEBERRY	2	#10	Clump/multi-stem, LHP to 115 moth and butterfly species (spp.)
<i>Arctostaphylos uva ursi</i>	BEARBERRY	30	#1	Requires acidic soil, slow growing groundcover, LHP 17 spp.
<i>Aronia melanocarpa</i>	BLACK CHOKEBERRY	4	#3	Berries are in high in anti-oxidants for humans and birds
<i>Carpinus caroliniana</i>	MUSCLEWOOD	1	2"	Also known as American Hornbeam or Blue Beech, LHP 70 spp.
<i>Ceanothus americanus</i>	NEW JERSEY TEA	5	#1	Cage while young to protect from herbivory
<i>Cephalanthus occidentalis</i>	BUTTONBUSH	1	#3	White globular flowers, LHP to over 20 spp.
<i>Cornus alternifolia</i>	ALTERNATE LEAVE DOGWOOD	1	#15	Also known as Pagoda Dogwood, LHP to 120 spp.
<i>Diervilla lonicera</i>	BUSH HONEYSUCKLE	7	#3	Good source of pollen and nectar
<i>Hamamelis virginiana</i>	WITCH HAZEL	1	#10	Yellow spider looking flowers in Oct, LHP to over 60 spp.
<i>Hypericum kalmianum</i>	KALM'S ST. JOHNSWORT	4	#1	Substitute as nec. <i>Hypericum prolificum</i> . Trim to maintain shape, LHP to over 20 spp
<i>Ilex verticillata</i>	WINTERBERRY	6	#3	Dioecious, male & female req'd for fruit production, LHP 35 spp.
<i>Juniperus horizontalis</i>	CREEPING JUNIPER	3	#3	As juniper slowly reaches maturity, some Deschampsia may need to be removed. LHP to over 30 spp.
<i>Myrica pensylvanica</i>	NORTHERN BAYBERRY	1	#3	Dark green, leathery leaves, prune for desired aesthetic
<i>Ostrya virginiana</i>	IRONWOOD	1	2"	Slow growing, deep tap root. Also known as American Hophornbeam, LHP to 86 spp.
<i>Rhus aromatica</i>	FRAGRANT SUMAC	3	#1	Straight species, not cultivar. Often available only as bare root or small containers (#1), this takes a few years to fill out. Prune / thin / remove as nec. LHP to 49 spp.
<i>Viburnum dentatum</i>	ARROWWOOD VIBURNUM	1	#3	Dark blue berries are good food source for birds, LHP 102 spp.

GRASSES, FERNS & SEDGES

BOTANICAL NAME	COMMON NAME	QTY	SIZE	NOTES:
<i>Carex albicans</i>	WHITE TINGE SEDGE	2	FLATS	Plug flats usually come in quantities of 38. Carex spp. are larval host plants to caterpillars of moths/butterflies
<i>Carex eburnea</i>	IVORY SEDGE	20	QT	Very fine textured, soft, small, bright green
<i>Carex muskingumensis</i>	PALM SEDGE	24	PLUG	Interesting texture, sedges are important food sources and habitat for fauna like birds and dragonflies
<i>Carex sprengelli</i>	LONG BEAKED SEDGE	19	PLUG	Drooping seedhead, elegant sedge as base to dramatic Rattlesnake Master
<i>Carex vulpinoides</i>	FOX SEDGE	85	PLUG	2 plug flats would suffice, modify layout in field
<i>Deschampsia caespitosa</i>	TUFTED HAIR GRASS	25	PLUG	Small seedheads billow, yellowish fall color
<i>Diarrhena americana</i>	BEAK GRASS	19	QT	Shiny leaves, regal grass for shade
<i>Osmunda cinnamomea</i>	CINNAMON FERN	28	#1	Tall fern, chickadees collect and use fluff in spring
<i>Polystichum acrostichoides</i>	CHRISTMAS FERN	11	#1	Semi-evergreen, small
<i>Sorghastrum nutans</i>	INDIAN GRASS	QT	6	Seedheads will be radiant in sunlight out western windows
<i>Sporobolus heterolepis</i>	PRAIRIE DROPSEED	45	PLUG	At entrance planting bed, is the matrix into which other plants, including shrubs are installed



LAKEHOUSE PLANT LIST				GRAND RAPIDS, MI
WILDFLOWERS & GROUNDCOVERS				
BOTANICAL NAME	COMMON NAME	QTY	SIZE	NOTES: see references for more larval host plant (LHP) info.
Antennaria neglecta	FIELD PUSSYTOES	21	PLUG	LHP: American Lady caterpillar, herbivory and nesting
Asarum canadense	WILD GINGER	30	QT	Deer resistant, heart shaped leaves, allow to spread
Asclepias incarnata	ROSE / SWAMP MILKWEED	9	PLUG	LHP: Monarch caterpillar, pink-white flower
Asclepias tuberosa	BUTTERFLY MILKWEED	8	QT	LHP: Monarch caterpillar, orange flower
Asclepias verticillata	WHORLED MILKWEED	15	PLUG	Allow some colonization / competition, LHP: Monarch
Baptisia alba	WHITE FALSE INDIGO	3	QT	Will rise above Sporobolus, adds nitrogen to soil
Campanulastrum americana	TALL BELLFLOWER	9	QT	Long blooming showy biennial, blue-violet bloom
Echinacea pallida	PALE PURPLE CONEFLOWER	26	PLUG	Many native bees visit flowers, birds eat seeds in fall
Echinacea purpurea	PURPLE CONEFLOWER	61	PLUG	Could reduce quantity and let spread naturally
Erygium yuccifolium	RATTLESNAKE MASTER	3	QT	Sculptural shape, yucca-like leaves
Eupatorium purpureum	SWEET JOE PYEWEEED	8	QT	Shade tolerant, purplish flower clusters
Eurybia divaricatus	WHITE WOOD ASTER	20	PLUG	Intentionally shorter than adj. perennials / ferns for affect
Gentian andrewsii	BOTTLE GENTIAN	7	QT	Late season royal-cobalt bloom, small stature, place close to walk
Geum triflorum	PRAIRIE SMOKE	27	PLUG	Very early bloom, thin, airy seedheads, attractive foliage
Helenium autumnale	SNEEZEWEED	2	QT	Sun-like, yellow bloom mid to late season
Iris virginica (versicolor)	SOUTHERN BLUE FLAG	55	PLUG	blue-violet bloom, architectural foliage, two similar species
Liatris scariosa	NORTHERN BLAZINGSTAR	15	QT	Pink-lavender vertical bloom
Liatris spicata	DENSE BLAZINGSTAR	20	QT	Taller Blazingstar at the lake side can handle wet soil
Monarda fistulosa	BEE BALM / BERGAMOT	18	PLUG	Lavender pink fireworks-like bloom, winter interest
Oenothera fruticosa	SUNDROPS	13	QT	Big yellow, day-blooming primrose, drought tolerant
Packera obovata	ROUND LEAVED RAGWORT	60	PLUG	Early yellow bloom, could reduce quantity, will spread
Phlox divaricata	WOODLAND PHLOX	11	QT	Short, blue bloom for early pollinators
Phlox pilosa	PRAIRIE PHLOX	20	QT	Short, repeated pink bloom
Polygonatum biflorum	SOLOMON'S SEAL	32	QT	Bumblebees & hummingbirds visit, spreads rhizomonously
Pyncanthemum virginum	MOUTAIN MINT	25	PLUG	Attracts many pollinator/beneficial insects, deer resistant
Rudbeckia fulgida	BLACK-EYED SUSAN	23	PLUG	Short, robust, yellow-orange bloom, birds eat seeds
Rudbeckia subtomentosa	SWEET BLACK-EYED SUSAN	4	QT	Tall, bright yellow bloom, birds eat seeds
Sedum ternatum	WILD STONECROP	8	QT	Allow spread between planks, transplant as necessary
Solidago caesia	BLUESTEM GOLDENROD	20	PLUG	Shade tolerant, one of shortest goldenrods, high LHP value
Solidago riddelli	RIDDELL'S GOLDENROD	3	QT	Wide grass like leaves, high LHP value
Symphotrichum oolentgiense	SKY BLUE ASTER	18	PLUG	Short, airy bloom, late season
Zizia aurea	GOLDEN ALEXANDERS	21	PLUG	Yellow umbel flowers, LHP: Black Swallowtail caterpillars

REFERENCES:
Michigan Flora, University of Michigan, michiganflora.net

Native Plant Finder, National Wildlife Federation, US Forest Service, University of Delaware
nwf.org/nativeplantfinder/ Valuable tool in searching for native plants and the animals that
rely on them. Based on research from the University of Delaware and others, and is still in the
“beta” phase, see terms of use.