



NARRATIVE

# Dallas-Fort Worth Native Garden Design



Native  
Plant  
Society  
of Texas

**T E N E Y C K**  
LANDSCAPE ARCHITECTS

When designing a home landscape, the first things we consider are the sun exposure and breezes which influence the micro-climates of the property. This property faces south, and the back garden is to the north which also affects micro-climates. In addition, we consider where water will flow from the roof, adjacent properties, and the natural slope of the property. We created detention rain gardens and swales to direct water from the downspouts to the gardens and away from the house. Then we decide on what we want the spine (paths and gathering space and major trees) of the landscape to be. In other words, if all the small planting were dormant, what would still be visible and where do we need shade from trees? We pay great attention to paths and outdoor gathering spaces and for this house, you can see that we have many, including the front and back porch, a fire pit gathering zone, and a corner refuge patio and arbor.

Because this house is in the north Dallas/Ft. Worth area we reference plants that are native to the Blackland Prairie and the Cross Timbers ecoregions. We are also imagining that this property might have clay as part of the soil profile. Because of the front sunny part of the property, we designed this area as a miniature prairie garden where we will add some sandy loam to the soil to help the drought tolerant prairie plants. Because the property slopes to the north we are proposing planted swales also amended with sandy loam to soak up and direct downspout water to the north and into detention rain gardens. We always encourage homeowners to consider small side gardens as these are important for bedroom views and privacy. You can see that for this garden we are proposing a wall and small fountain for a nice sound and view from one of the rooms.

The north garden is more of a woodland garden surrounding a small native lawn. We have used species that can manage additional water in and around the rain gardens. We have designed destinations deep in the landscape away from the house so a homeowner can feel immersed in the beauty of the native plant palette.

## PHASING PLANS A & B

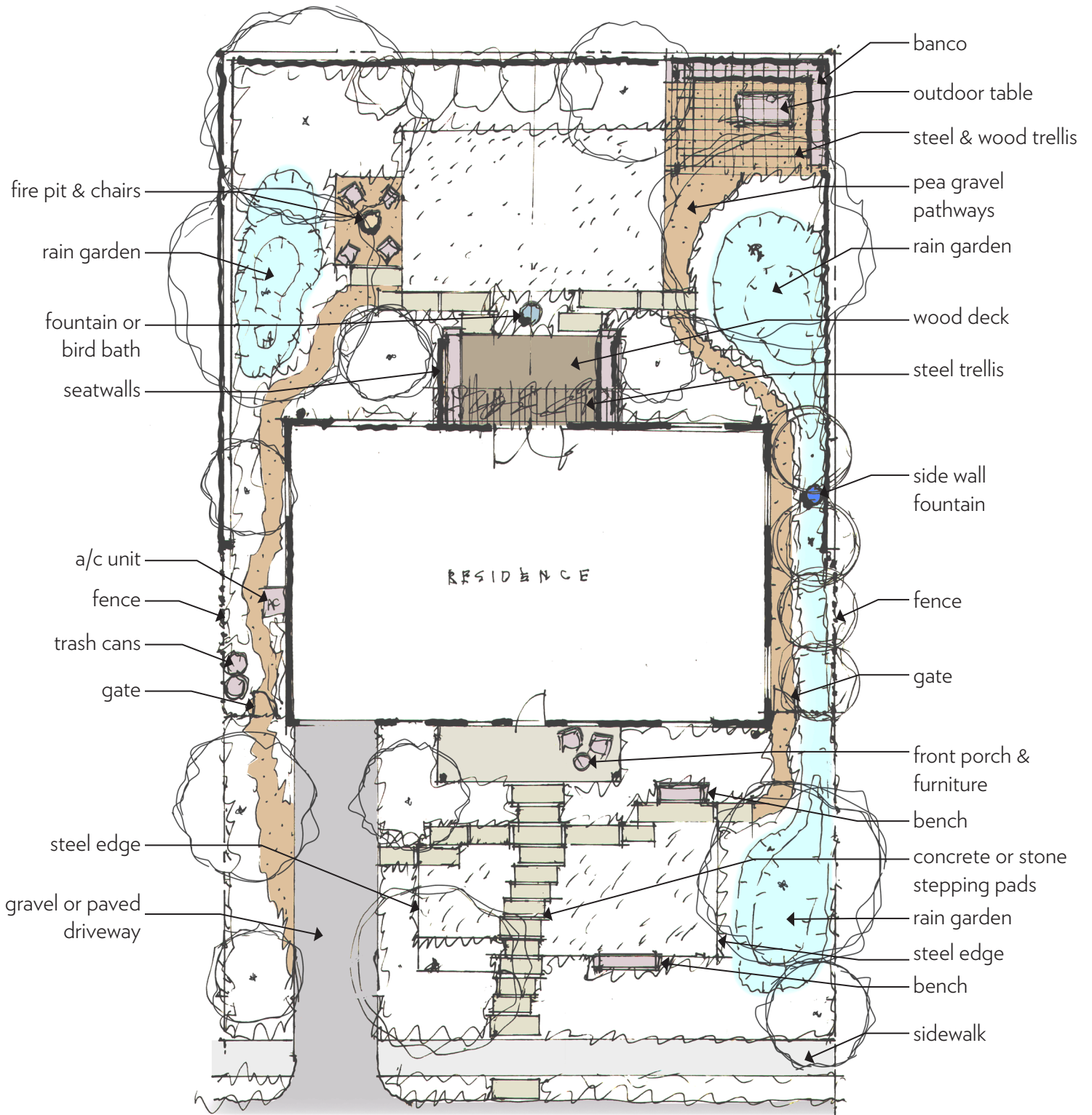
### Phasing Plan A

- 1: All Site Grading, Hardscape Elements & Tree Planting
- 2: All Irrigation & Remaining Planting

### Phasing Plan B

- 1: Front Hardscape, Planting & Irrigation
- 2: Back Patio, Grading, Irrigation & Planting
- 3: Corner Patio, Banco & Arbor
- 4: Fire Pit
- 5: Side Wall Fountain

# HARDSCAPE PLAN : OVERALL



1/16" = 1'-0"



# HARDSCAPE ELEMENTS



Concrete or Stone Stepping Pads



Banco

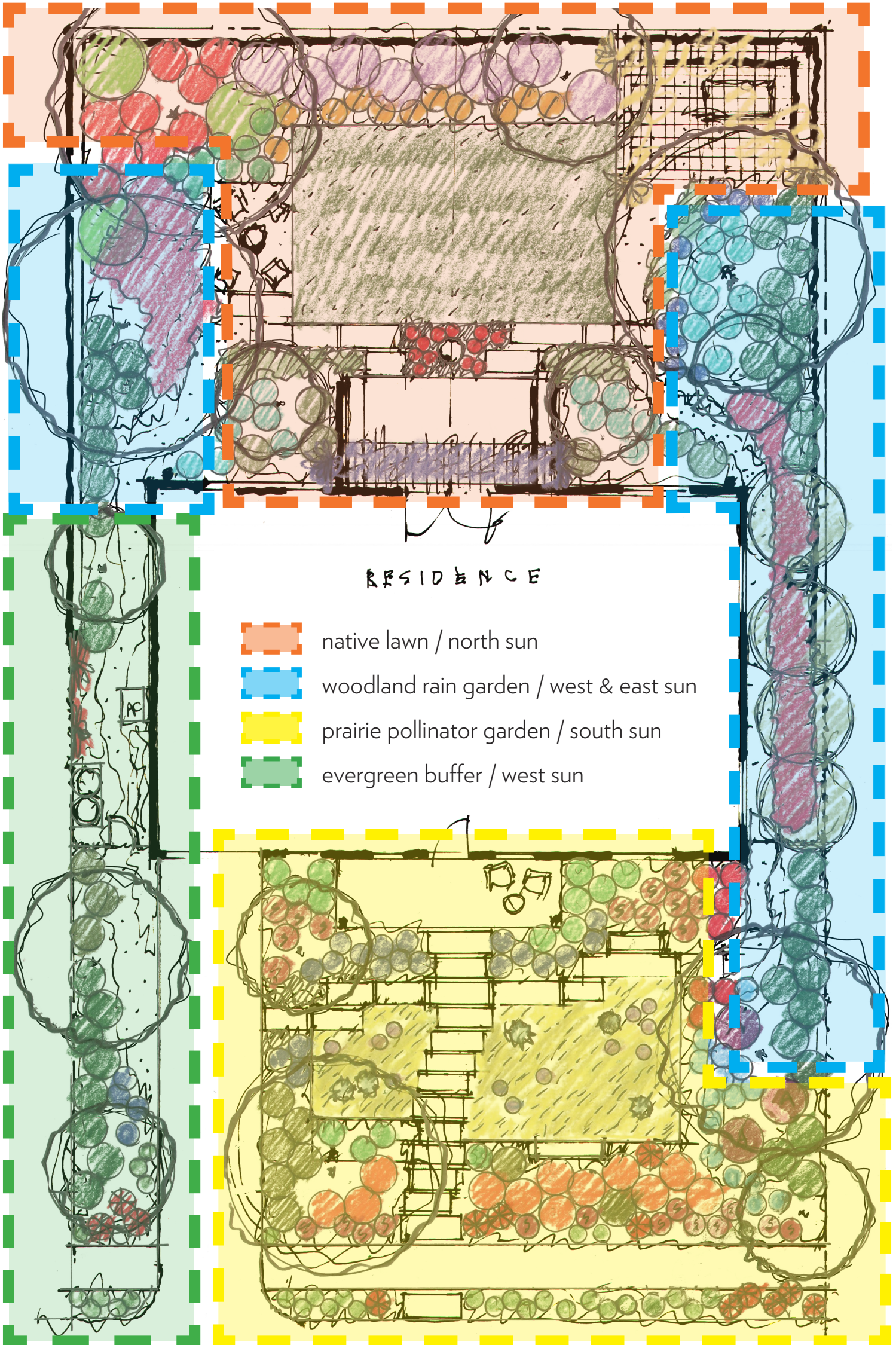


Steel Trellis







Fire Pit and Gravel Seating Area

# PLAN ENLARGEMENT KEY MAP



RESIDENCE

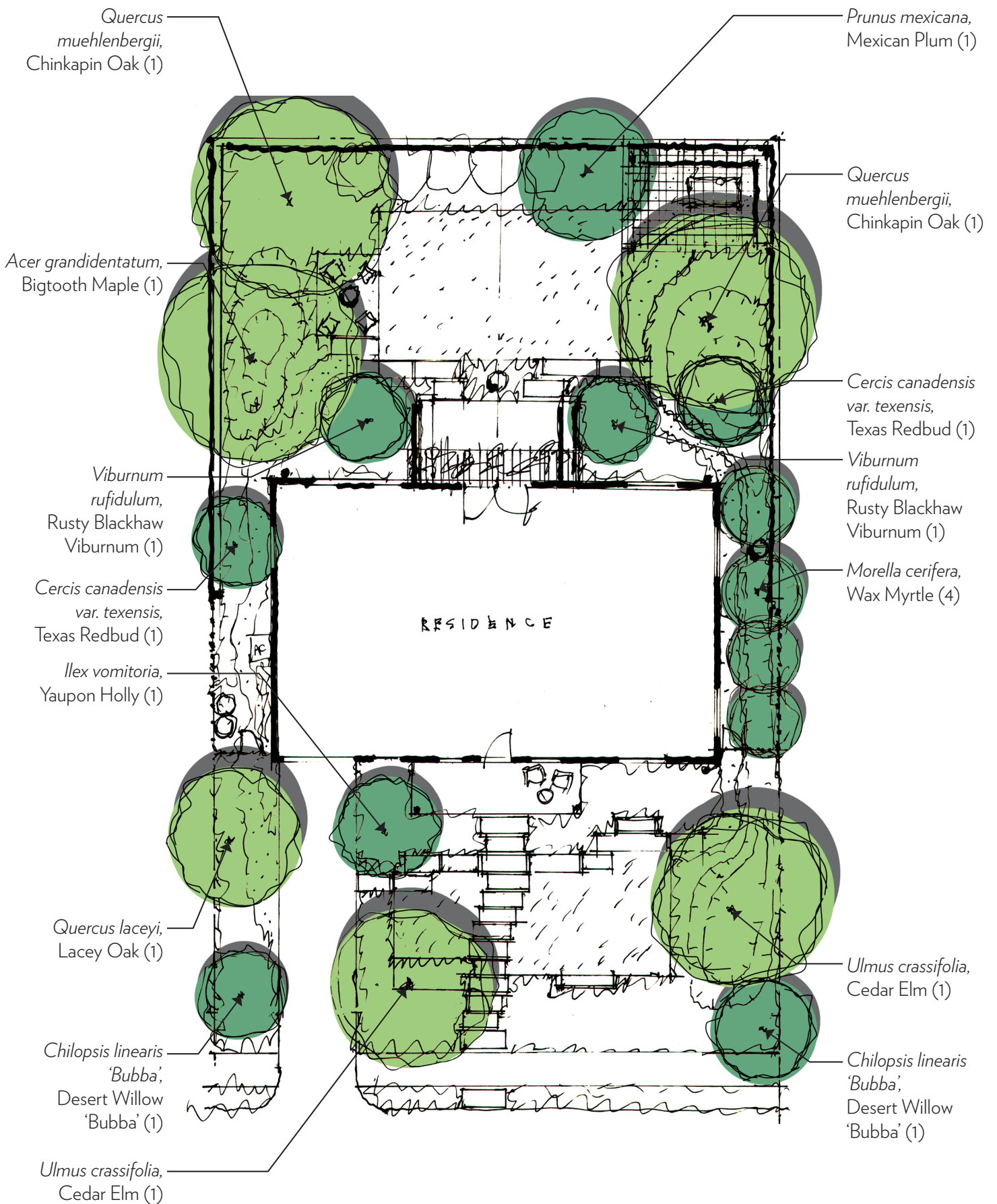
-  native lawn / north sun
-  woodland rain garden / west & east sun
-  prairie pollinator garden / south sun
-  evergreen buffer / west sun

1" = 10'

0' 5' 10' 20'



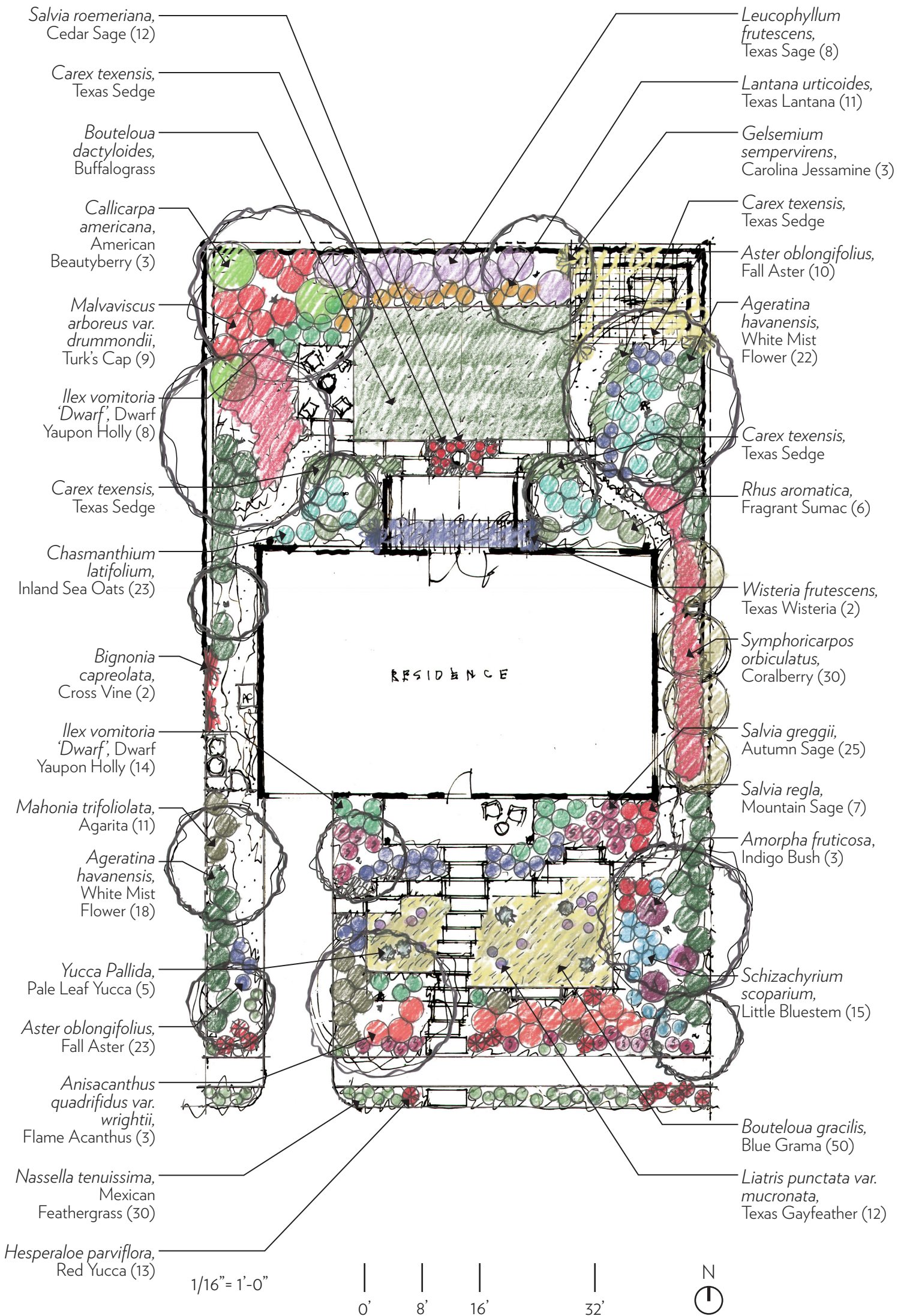
# PLANTING PLAN : TREES



1/16" = 1'-0"



# PLANTING PLAN : OVERALL



# PROPOSED PLANT LIST







## TREES

- BM** *Acer grandidentatum*, Bigtooth Maple
- TR** *Cercis canadensis* var. *texensis*, Texas Redbud
- DW** *Chilopsis linearis* 'Bubba', Desert Willow 'Bubba'
- YH** *Ilex vomitoria*, Yaupon Holly
- WM** *Morella cerifera*, Wax Myrtle
- MP** *Prunus mexicana*, Mexican Plum
- LO** *Quercus laceyi*, Lacey Oak
- CO** *Quercus muehlenbergii*, Chinkapin Oak
- CE** *Ulmus crassifolia*, Cedar Elm
- RBV** *Viburnum rufidulum*, Rusty Blackhaw Viburnum




## SHRUBS & PERENNIALS

-  *Ageratina havanensis*, White Mist Flower / Boneset
-  *Amorpha fruticosa*, Indigo Bush
-  *Anisacanthus quadrifidus* var. *wrightii*, Flame Acanthus
-  *Aster oblongifolius*, Fall Aster
-  *Callicarpa americana*, American Beautyberry
-  *Hesperaloe parviflora*, Red Yucca
-  *Ilex vomitoria* 'Dwarf', Dwarf Yaupon Holly
-  *Lantana urticoides*, Texas Lantana
-  *Leucophyllum frutescens*, Texas Sage
-  *Liatris punctata* var. *mucronata*, Gayfeather
-  *Mahonia trifoliolata*, Agarita
-  *Malvaviscus arboreus* var. *drummondii*, Turk's Cap
-  *Rhus aromatica*, Fragrant Sumac
-  *Salvia greggii*, Autumn Sage
-  *Salvia regia*, Mountain Sage
-  *Salvia roemeriana*, Cedar Sage
-  *Symphoricarpos orbiculatus*, Coralberry
-  *Yucca Pallida*, Pale Leaf Yucca

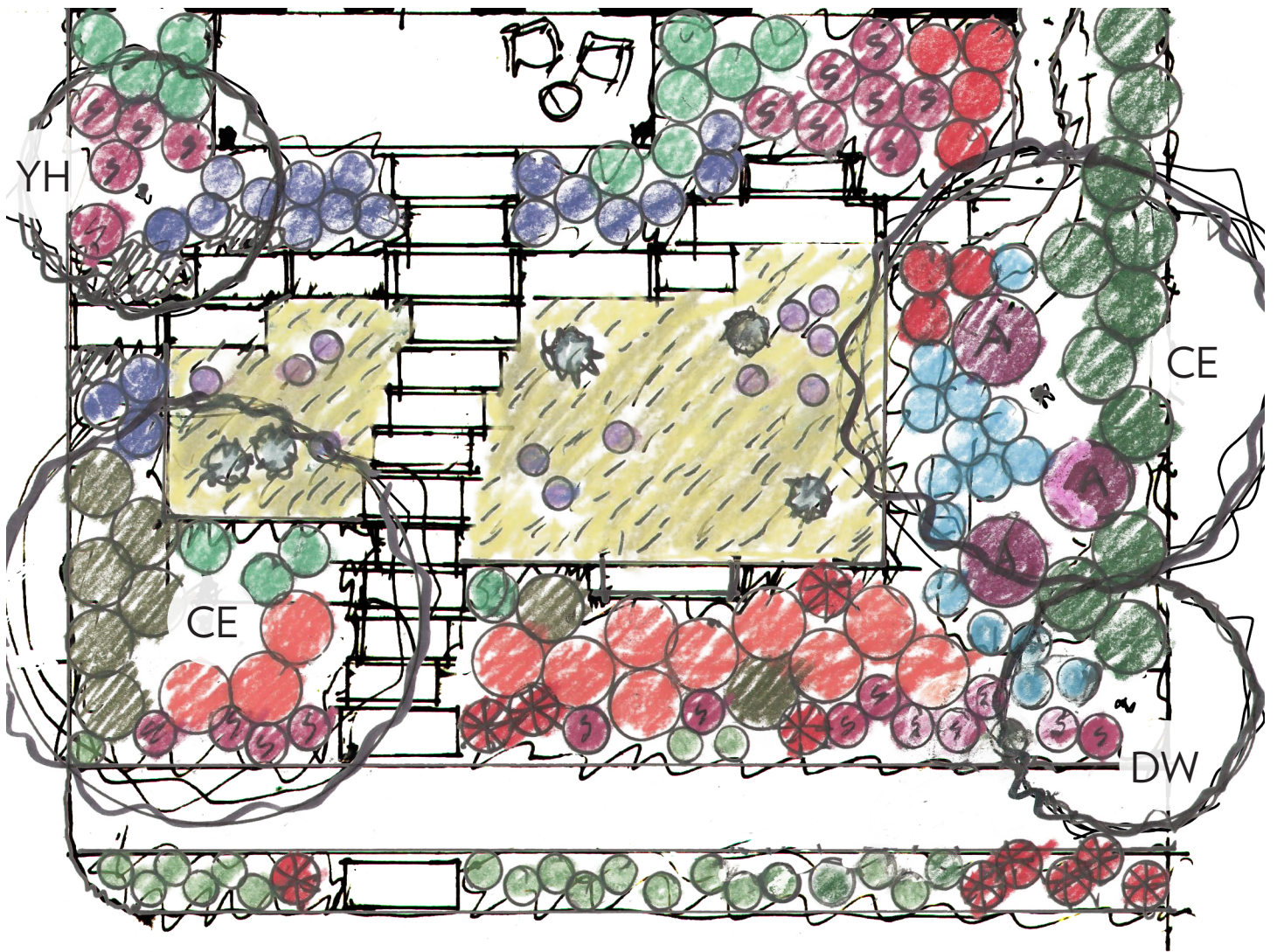
## GRASSES

-  *Bouteloua dactyloides*, Buffalograss
-  *Bouteloua gracilis*, Blue Grama
-  *Carex texensis*, Texas Sedge
-  *Chasmanthium latifolium*, Inland Sea Oats
-  *Nassella tenuissima*, Mexican Feathergrass
-  *Schizachyrium scoparium*, Little Bluestem

## VINES

-  *Bignonia capreolata*, Cross Vine
-  *Gelsemium sempervirens*, Carolina Jessamine
-  *Wisteria frutescens*, Texas Wisteria

# PLANTING ENLARGEMENT : PRAIRIE POLLINATOR GARDEN



1/8" = 1'-0"  
 0'      4'      8'      16'



*Anisacanthus quadrifidus*, Flame Acanthus



*Bouteloua gracilis*, Blue Grama



*Liatris punctata* var. *mucronata*, Gayfeather










*Yucca pallida*, Pale Leaf Yucca




## TREES

- DW *Chilopsis linearis* 'Bubba', Desert Willow 'Bubba'
- YH *Ilex vomitoria*, Yaupon Holly
- CE *Ulmus crassifolia*, Cedar Elm

## SHRUBS & PERENNIALS

-  *Ageratina Havenensis*, White Mist Flower / Boneset
-  *Amorpha fruticosa*, Indigo Bush
-  *Anisacanthus quadrifidus* var. *wrightii*, Flame Acanthus
-  *Aster oblongifolius*, Fall Aster
-  *Hesperaloe parviflora*, Red Yucca
-  *Ilex vomitoria* 'Dwarf', Dwarf Yaupon Holly
-  *Liatris punctata* var. *mucronata*, Texas Gayfeather
-  *Mahonia trifoliolata*, Agarita
-  *Salvia greggii*, Autumn Sage
-  *Salvia regla*, Mountain Sage
-  *Yucca pallida*, Pale Leaf Yucca

## GRASSES

-  *Bouteloua gracilis*, Blue Grama
-  *Nassella tenuissima*, Mexican Feathergrass
-  *Schizachyrium scoparium*, Little Bluestem







# PLANTING ENLARGEMENT : WOODLAND RAIN GARDEN EAST



## TREES

- TR *Cercis canadensis* var. *texensis*, Texas Redbud
- WM *Morella cerifera*, Wax Myrtle
- CO *Quercus muehlenbergii*, Chinkapin Oak
- CE *Ulmus crassifolia*, Cedar Elm

## SHRUBS & PERENNIALS

-  *Ageratina Havenensis*, White Mist Flower / Boneset
-  *Amorpha fruticosa*, Indigo Bush
-  *Aster oblongifolius*, Fall Aster
-  *Symphoricarpos orbiculatus*, Coralberry

## GRASSES

-  *Chasmanthium latifolium*, Inland Sea Oats
-  *Schizachyrium scoparium*, Little Bluestem



*Chasmanthium latifolium*, Inland Sea Oats



*Ageratina Havenensis*, White Mist Flower



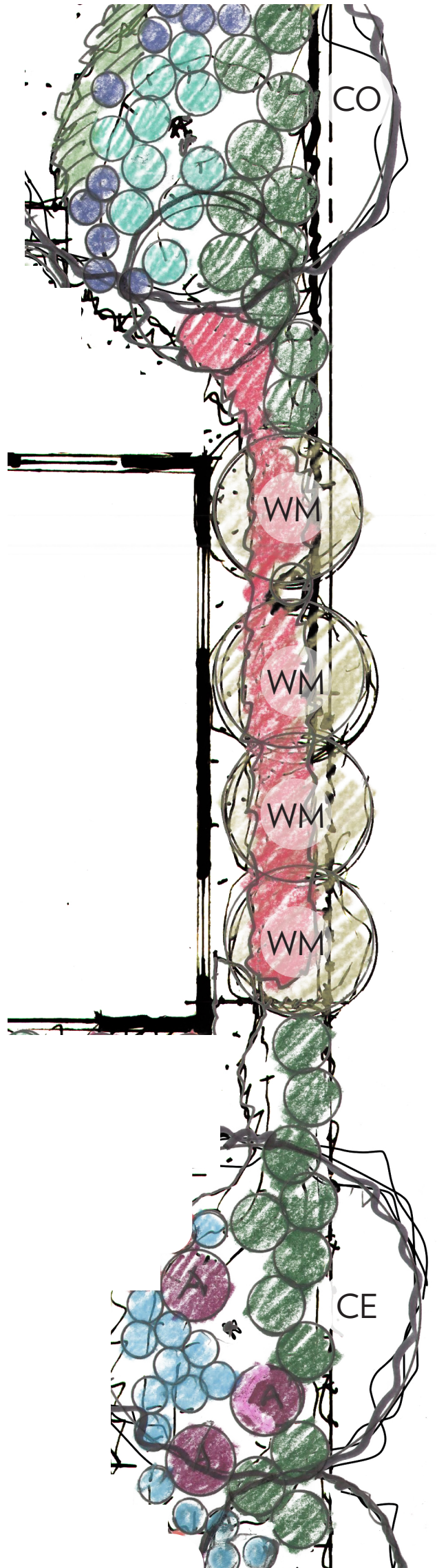
*Symphoricarpos orbiculatus*, Coralberry



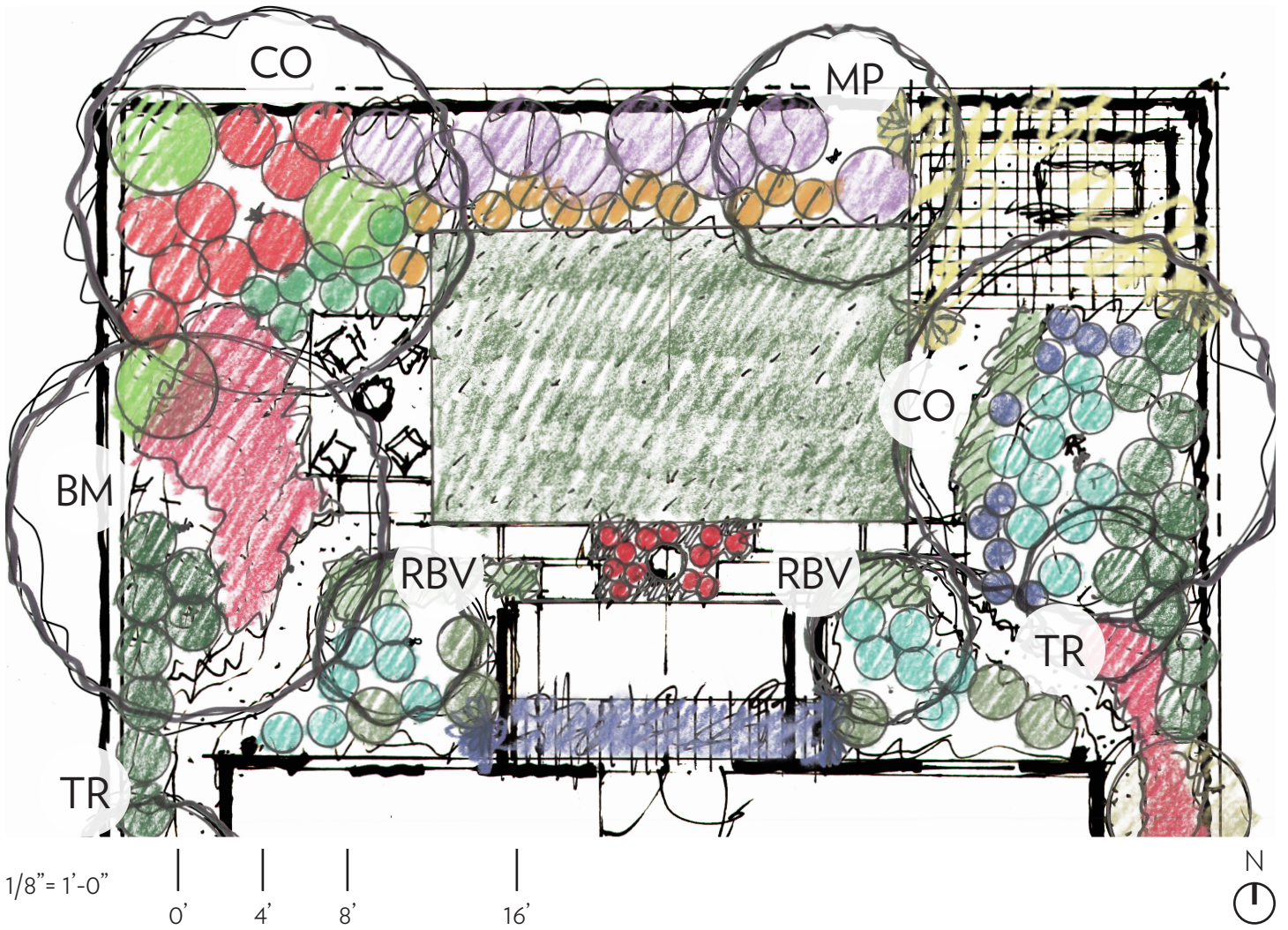
*Amorpha fruticosa*, Indigo Bush



*Schizachyrium scoparium*, Little Bluestem



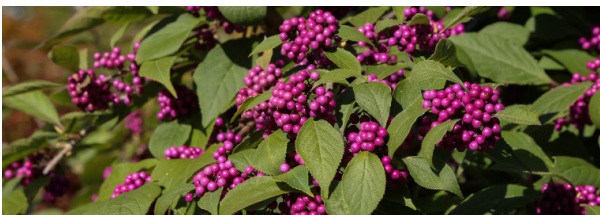
# PLANTING ENLARGEMENT : NATIVE LAWN



*Wisteria frutescens*, Texas Wisteria



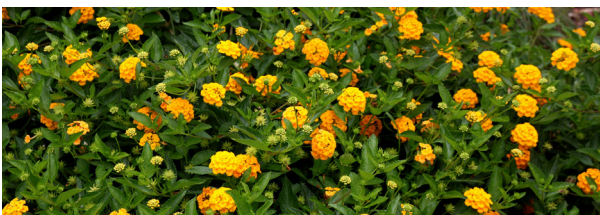
*Salvia roemeriana*, Cedar Sage



*Callicarpa americana*, American Beautyberry



*Carex texensis*, Texas Sedge



*Lantana urticoides*, Texas Lantana




## TREES

- BM *Acer grandidentatum*, Bigtooth Maple
- TR *Cercis canadensis* var. *texasensis*, Texas Redbud
- MP *Prunus mexicana*, Mexican Plum
- CO *Quercus muehlenbergii*, Chinkapin Oak
- RBV *Viburnum rufidulum*, Rusty Blackhaw Viburnum



## SHRUBS & PERENNIALS

-  *Ageratina Havenensis*, White Mist Flower / Boneset
-  *Callicarpa americana*, American Beautyberry
-  *Hesperaloe parviflora*, Red Yucca
-  *Ilex vomitoria* 'Dwarf', Dwarf Yaupon Holly
-  *Lantana urticoides*, Texas Lantana
-  *Leucophyllum frutescens*, Texas Sage
-  *Malvaviscus arboreus* var. *drummondii*, Turk's Cap
-  *Rhus aromatica*, Fragrant Sumac
-  *Salvia roemeriana*, Cedar Sage
-  *Symphoricarpos orbiculatus*, Coralberry

## GRASSES

-  *Bouteloua dactyloides*, Buffalograss
-  *Carex texensis*, Texas Sedge
-  *Chasmanthium latifolium*, Inland Sea Oats

## VINES





-  *Gelsemium sempervirens*, Carolina Jessamine
-  *Wisteria frutescens*, Texas Wisteria

# PLANTING ENLARGEMENT : EVERGREEN BUFFER

## TREES

- TR *Cercis canadensis var. texensis*, Texas Redbud
- DW *Chilopsis linearis 'Bubba'*, Desert Willow 'Bubba'
- LO *Quercus laceyi*, Lacey Oak


## SHRUBS & PERENNIALS

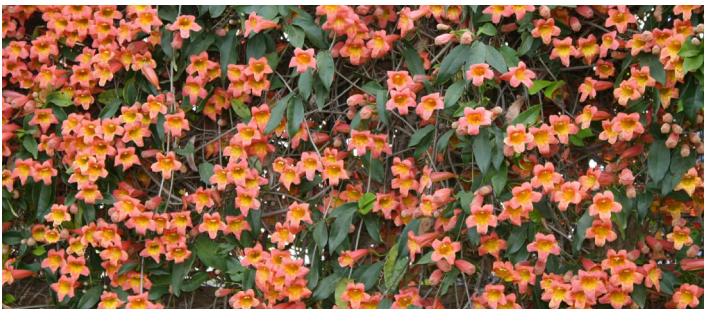
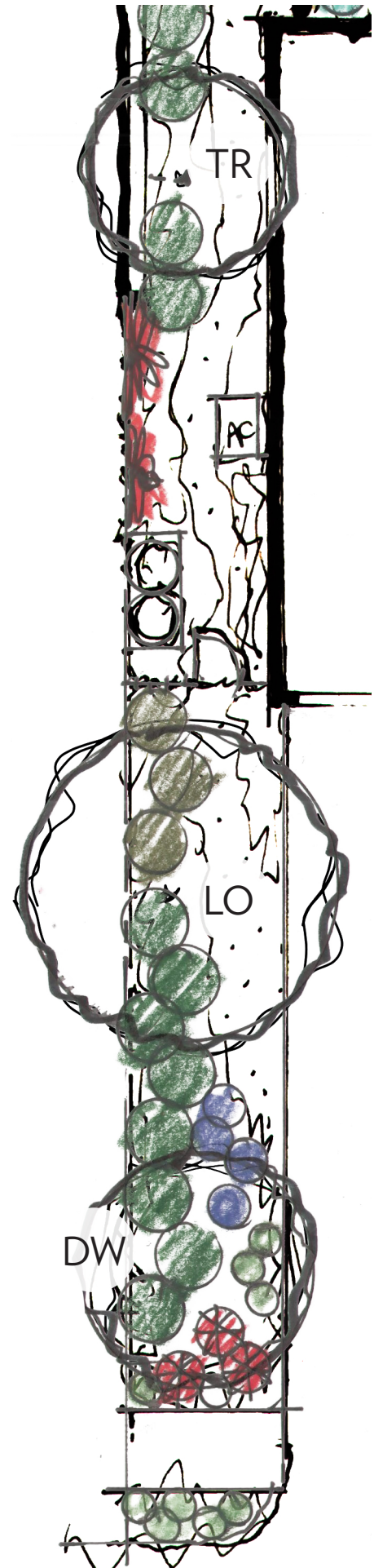
-  *Ageratina Havenensis*, White Mist Flower / Boneset
-  *Aster oblongifolius*, Fall Aster
-  *Hesperaloe parviflora*, Red Yucca
-  *Mahonia trifoliolata*, Agarita

## GRASSES

-  *Nassella tenuissima*, Mexican Feathergrass

## VINES

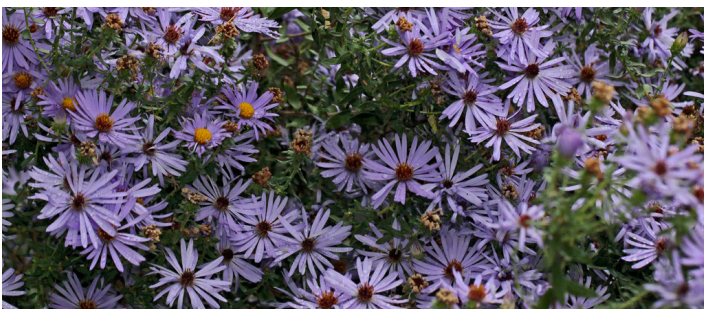
-  *Bignonia capreolata*, Cross Vine



*Bignonia capreolata*, Cross Vine



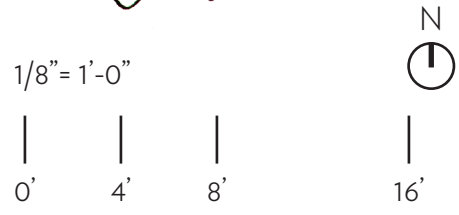
*Mahonia trifoliolata*, Agarita



*Aster oblongifolius*, Fall Aster



*Hesperaloe parviflora*, Red Yucca



# CROSS TIMBERS / BLACKLAND PRAIRIE NATIVE PLANTING LIST

## TREES

Botanical Name	Common Name	Height	Spread	Fruit/Bloom	Notes
<i>Acer floridanum</i>	Caddo Maple	<60'	25'-40'	Yellow, Green	Perennial, Deciduous, Part Shade, Moderate Water
<i>Acer grandidentatum</i>	Bigtooth Maple	<45'	25'-35'	Yellow, Green	Perennial, Deciduous, Full Sun, Moderate Water
<i>Acer negundo</i>	Box Elder	<50'	25'-43'	Yellow, Green, Brown	Perennial, Deciduous, Full Sun, Moderate Water
<i>Aesculus glabra</i>	Texas Buckeye	50'-75'	40'-50'	Yellow, Green, Brown	Perennial, Deciduous, Sun to Shade, Moderate Water, Poisonous
<i>Carya illinoensis</i>	Pecan	<160'	40'-70'	Yellow, Brown	Perennial, Deciduous, Sun, High Water
<i>Carya texana</i>	Black Hickory	<140'	<100'	Red	Perennial, Deciduous, Part Shade, Moderate Water
<i>Cercis canadensis var. texensis</i>	Texas Redbud	<20'	15'-25'	Purple, Pink, White	Perennial, Deciduous, Sun to Part Shade, Low to Moderate Water
<i>Chilopsis linearis</i>	Desert Willow	15'-40'	10'-15'	White, Pink, Purple, Violet	Perennial, Deciduous, Full Sun, Low Water
<i>Cornus drummondii</i>	Roughleaf Dogwood	15'-20'	10'-15'	White	Perennial, Deciduous, Part Shade to Shade, Low Water
<i>Cotinus obovatus</i>	American Smoke Tree	15'-30'	15'-30'	Pink, Yellow, Purple	Perennial, Deciduous, Sun to Part Shade, Low Water
<i>Diospyros texana</i>	Texas Persimmon	<45'	15'-25'	White, Green	Perennial, Deciduous / Semi-Evergreen, Sun to Part Shade, Low Water
<i>Frangula caroliniana</i>	Carolina Buckthorn	12'-15'	10'-15'	White, Yellow, Green	Perennial, Deciduous, Part Shade, Moderate Water
<i>Fraxinus albicans</i>	Texas Ash	30'-45'	<30'	Red, Green, Purple	Perennial, Deciduous, Part Shade, Low Water
<i>Fraxinus americana</i>	White Ash, American Ash	75'-120'	60'-80'	Yellow, Purple	Perennial, Deciduous, Sun to Shade, High Water
<i>Ilex decidua</i>	Possumhaw Holly	15'-30'	10'-15'	White	Perennial, Deciduous, Sun to Part Shade, Moderate Water
<i>Ilex vomitoria</i>	Yaupon Holly	12'-30'	6'-12'	White	Perennial, Evergreen, Sun to Shade, Low Water
<i>Juglans nigra</i>	Black Walnut, American Black Walnut	50'-75'	50'-75'	Yellow, Green, Brown	Perennial, Deciduous, Sun to Part Shade, High Water
<i>Juniperus ashei</i>	Ashe Juniper, Texas Cedar	<30'	15'-25'	White, Brown	Perennial, Evergreen, Part Shade, Low Water
<i>Juniperus virginiana</i>	Eastern Red Cedar	30'-40'<	8'-25'	Green, Purple, Brown	Perennial, Evergreen, Sun to Shade, Low Water
<i>Leucaena retusa</i>	Goldenball Leadtree	12'-25'	15'-25'	Yellow	Perennial, Deciduous, Part Shade, Low Water
<i>Magnolia grandiflora</i>	Southern Magnolia	50'-100'	30'-40'	White	Perennial, Evergreen, Sun to Part Shade, Moderate Water
<i>Pinus taeda</i>	Loblolly Pine	60'-100'	20'-40'	Yellow, Brown	Perennial, Evergreen, Part Shade, High Water
<i>Platanus occidentalis</i>	American Sycamore	75'-100'	40'-70'	Red, Yellow, Green, Brown	Perennial, Deciduous, Sun to Shade, High Water
<i>Prosopis glandulosa</i>	Honey Mesquite	<30'	<30'	Yellow	Perennial, Deciduous, Sun, Low Water
<i>Prunus caroliniana</i>	Carolina Cherry Laurel	15'-40'	15'-20'	White	Perennial, Evergreen, Sun to Part Shade, Moderate Water

# TREES

Botanical Name	Common Name	Height	Spread	Fruit/Bloom	Notes
<i>Prunus mexicana</i>	Mexican Plum	10'-35'	20'-30'	White, Pink	Perennial, Deciduous, Sun to Part Shade, Low Water
<i>Quercus fusiformis</i>	Texas Live Oak	20'-40'	25'-40'	Yellow, Brown	Perennial, Semi-Evergreen, Sun to Part Shade, Low Water
<i>Quercus laceyi</i>	Lacey Oak	30'-60'	20'-30'	Yellow, Green	Perennial, Deciduous, Sun to Part Shade, Low Water
<i>Quercus macrocarpa</i>	Bur Oak	100'-150'	70'-80'	Yellow, Green, Brown	Perennial, Deciduous, Sun to Shade, Moderate Water
<i>Quercus marilandica</i>	Blackjack Oak	30'-60'	20'-40'	White, Red, Green	Perennial, Deciduous, Part Shade, Low Water
<i>Quercus muehlenbergii</i>	Chinkapin Oak	45'-100'	30'-70'	Yellow, Green, Brown	Perennial, Deciduous, Sun to Part Shade, Moderate Water
<i>Quercus shumardii</i>	Shumard Oak	50'-90'	30'-40'	White, Green	Perennial, Deciduous, Sun to Part Shade, Moderate Water
<i>Quercus sinuata var. breviloba</i>	Bigelow Oak	12'-30'	25'-35'	Red	Perennial, Deciduous, Part Shade, Low Water
<i>Quercus stellata</i>	Post Oak	40'-50'	40'-70'	Yellow, Green, Brown	Perennial, Deciduous, Sun to Part Shade, Moderate Water
<i>Quercus texana</i>	Texas Oak	75'-100'	30'-60'	Yellow	Perennial, Deciduous, Part Shade, Moderate Water
<i>Rhus lanceolata</i>	Flameleaf Sumac	15'-30'	10'-15'	White, Yellow, Green	Perennial, Deciduous, Sun, Low to Moderate Water
<i>Sapindus saponaria var. drummondii</i>	Western Soapberry	10'-50'	20'-30'	White, Yellow	Perennial, Deciduous, Sun to Part Shade, Low Water
<i>Styphnolobium affine</i>	Eve's Necklace	15'-30'	10'-20'	White, Pink	Perennial, Deciduous, Part Shade, Low Water
<i>Taxodium distichum</i>	Bald Cypress	50'-75'	20'-45'	Purple	Perennial, Deciduous, Sun to Part Shade, Moderate Water
<i>Ulmus americana</i>	American Elm	60'-80'	40'-70'	Red, Green	Perennial, Deciduous, Sun to Part Shade, High Water
<i>Ulmus crassifolia</i>	Cedar Elm	30'-60'	40'-60'	Green	Perennial, Deciduous, Part Shade, Moderate Water
<i>Ungnadia speciosa</i>	Mexican Buckeye	8'-12'	15'-20'	Pink	Perennial, Deciduous, Sun to Part Shade, Low Water
<i>Viburnum rufidulum</i>	Rusty Blackhaw Viburnum	18'-30'	20'-25'	White	Perennial, Deciduous, Part Shade, Low Water

# SHRUBS

Botanical Name	Common Name	Height	Spread	Fruit/Bloom	Notes
<i>Ageratina Havenensis</i>	White Mistflower	2'-6'	2'-6'	White, Pink	Perennial, Sun to Part Shade, Low Water
<i>Amorpha fruticosa</i>	Indigo Bush	<12'	6'-15'	Blue, Orange, Purple, Violet	Perennial, Deciduous, Sun to Part Shade, Low Water
<i>Anisacanthus quadrifidus var. wrightii</i>	Flame Acanthus	3'-5'	4'	Red, Orange	Perennial, Deciduous, Full Sun to Part Shade, Low Water
<i>Callicarpa americana</i>	American Beautyberry	3'-6'	4'-6'	Purple, Pink, White	Perennial, Deciduous, Part Shade, Low Water
<i>Cephalanthus occidentalis</i>	Buttonbush	<12'	10'	White, Pink	Perennial, Deciduous, Part Shade to Shade, High Water
<i>Fallugia paradoxa</i>	Apache Plume	2'-6'	4'-6'	White	Perennial, Deciduous, Part Shade, Low Water
<i>Hibiscus laevis</i>	Halberdleaf Rosemallow	<6'	2'-6'	White, Red, Pink	Perennial, Deciduous, Sun to Part Shade, High Water
<i>Ilex vomitoria 'Dwarf'</i>	Dwarf Yaupon Holly	3'-5'	3'-6'	White, Green, Red	Perennial, Evergreen, Sun to Part Shade, Moderate Water
<i>Itea virginica</i>	Virginia Sweetspire	3'-6'	<10'	White	Perennial, Deciduous, Part Shade, High Water
<i>Lantana urticoides</i>	Texas Lantana	<6'	2'-6'	Red, Yellow, Orange	Perennial, Sun, Low Water
<i>Leucophyllum frutescens</i>	Texas Sage	2'-5'<	4'-6'	White, Pink, Purple, Violet	Perennial, Evergreen, Sun to Part Shade, Low Water
<i>Linum lewisii</i>	Blue Flax	18"-30"	1'-2'	Blue, Purple	Perennial, Sun, Moderate Water
<i>Mahonia swaseyi</i>	Texas Barberry	3'-6'	<5'	Yellow, Red	Perennial, Evergreen, Sun, Low Water
<i>Mahonia trifoliolata</i>	Agarita	3'-6'	2'-6'	Yellow, Red	Perennial, Evergreen, Sun to Part Shade, Low Water
<i>Malvaviscus arboreus var. drummondii</i>	Turk's Cap	2'-3'<	4'-6'	White, Red	Perennial, Deciduous, Part Shade to Shade, Moderate Water
<i>Morella cerifera</i>	Wax Myrtle	6'-12'	8'-10'	Green	Perennial, Evergreen, Sun to Part Shade, High Water
<i>Myrica cerifera var. pumila</i>	Dwarf Wax Myrtle	3'-6'	3'-6'	Yellow, Tan	Perennial, Evergreen, Sun to Shade, Moderate Water
<i>Pavonia lasiopetala</i>	Rock Rose	<4'	<3'	Pink, Yellow	Perennial, Sun to Part Shade, Low Water
<i>Philadelphus texensis</i>	Texas Mock Orange		2'-5'	White	Perennial, Deciduous, Part Shade, Low Water
<i>Rhus aromatica</i>	Fragrant Sumac	6'-12'	4'-6'	Yellow	Perennial, Deciduous, Sun to Shade, Low Water
<i>Rhus glabra</i>	Smooth Sumac	10'-20'	9'-15'	White, Yellow, Green, Brown	Perennial, Deciduous, Sun to Shade, Low Water
<i>Rosa setigera</i>	Climbing Prairie Rose	6'-15'	8'-10'	White, Pink	Perennial, Deciduous, Sun to Shade, Low Water
<i>Salvia greggii</i>	Autumn Sage	2'-3'	2'-3'	White, Red, Pink, Orange, Purple	Perennial, Evergreen / Semi-Evergreen, Sun, Low Water
<i>Salvia lyrata</i>	Lyreleaf Sage	1'-2'	6"-12"	White, Blue, Purple	Perennial, Evergreen, Sun to Shade, Low to Moderate Water
<i>Salvia regla</i>	Mountain Sage	<5'	<4'	Red	Perennial, Deciduous, Part Shade to Shade, Low Water
<i>Senna roemeriana</i>	Two Leaved Senna	1'-2'	1'-2'	Yellow	Perennial, Deciduous, Part Shade, Low Water
<i>Senna wislizeni</i>	Canyon Senna	4'-6'	<10'	Orange, Yellow	Perennial, Deciduous, Sun, Low Water
<i>Symphoricarpos orbiculatus</i>	Coralberry	4'-6'	3'-6'	White, Green	Perennial, Deciduous, Part Shade to Shade, Low to Moderate Water
<i>Viguiera stenoloba</i>	Skeleton Leaf Goldeneye	2'-4'	2'-3'	Yellow	Perennial, Sun to Part Shade, Low Water

# PERENNIALS

Botanical Name	Common Name	Height	Spread	Fruit/Bloom	Notes
<i>Allium stellatum</i>	Prarie Onion	1'-2'	6"-12"	White, Pink, Purple	Perennial, Part Shade, Moderate Water
<i>Amblyolepis setigera</i>	Huisache Daisy, Butterfly Daisy	6"-15"	4"-8"	Yellow	Annual, Part Shade, Low Water
<i>Aquilegia canadensis</i>	Eastern Red Columbine	<3'	12"-18"	Red, Pink, Yellow	Perennial, Semi-Evergreen, Part Shade to Shade, Low to Moderate Water
<i>Asclepias tuberosa</i>	Butterfly Weed, Butterfly Milkweed	1'-2'	12"-18"	Orange, Yellow	Perennial, Deciduous, Full Sun, Low Water
<i>Symphyotrichum oblongifolium</i>	Fall Aster	<3'	1'-3'	Purple, Violet	Perennial, Sun to Part Shade, Low Water
<i>Callirhoe involucrata</i>	Winecup, Purple Poppy Mallow	8"-12"	<3'	Purple, Pink, White	Perennial, Evergreen / Semi-Evergreen, Sun to Part Shade, Moderate Water
<i>Calylophus tubicula</i>	Calylophus, Texas Sundrops	<20"	1'-2'	Yellow	Perennial, Sun, Low Water
<i>Calyptocarpus vialis</i>	Horseherb	6"-12"	12"	Yellow	Perennial, Semi-Evergreen, Sun to Shade, Low to Moderate Water
<i>Capsicum annuum</i>	Chile Pequin	<2'	1'-3'	White	Annual / Perennial, Deciduous, Sun to Shade, Low Water
<i>Castilleja indivisa</i>	Texas Paintbrush, Indian Paintbrush	<18"	12"-18"	Red, Orange, Yellow, White	Annual/ Biennial, Sun, Moderate Water
<i>Centaurea americana</i>	Basket Flower	<6'	1'-2'	Purple, Pink, White	Annual, Sun to Part Shade, Low Water
<i>Chamaecrista fasciculata</i>	Partridge Pea	1'-3'	1'-3'	Yellow	Annual, Deciduous, Sun to Part Shade, Moderate Water
<i>Conoclinium coelestinum</i>	Blue Mistflower	<3'	18"-36"	Blue, Purple	Perennial, Sun to Part Shade, Moderate Water
<i>Conoclinium greggii</i>	Gregg's Mistflower	<2'	<2'	Blue, Purple	Perennial, Sun to Part Shade, Moderate Water
<i>Cooperia drummondii</i>	Evening Rain Lily	6"-12"	3"-6"	White	Perennial, Deciduous, Sun to Part Shade, Moderate Water
<i>Cooperia pedunculata</i>	Prairie Rain Lily	6"-12"	6"-12"	White	Perennial, Sun, Low Water
<i>Coreopsis lanceolata</i>	Coreopsis	1'-2'	12"-18"	Yellow	Perennial, Evergreen, Sun to Shade, Moderate Water
<i>Coreopsis tinctoria</i>	Plains Coreopsis	1'-2'	12"-18"	Red, Yellow, Brown	Annual, Sun to Part Shade, High Water
<i>Datura wrightii</i>	Datura	<6'	<10'	White, Purple, Violet	Annual, Sun to Part Shade, Moderate Water, Poisonous
<i>Echinacea angustifolia</i>	Black Samson, Narrow-leaf Coneflower	<2'	8"-18"	Pink, Purple	Perennial, Sun to Part Shade, Low Water
<i>Echinacea purpurea</i>	Purple Coneflower	2'-4'	18"-24"	Pink, Purple	Perennial, Sun to Part Shade, Moderate Water
<i>Engelmannia peristenia</i>	Engelmann's Daisy, Cutleaf Daisy	<2'	18"-24"	Yellow	Perennial, Evergreen, Sun to Part Shade, Low Water
<i>Eryngium leavenworthii</i>	Eryngo, False Purple Thistle	2'-3'	1'-2'	Purple, Blue	Annual, Sun to Part Shade, Low Water
<i>Erythrina herbacea</i>	Coralbean	<6'	6'-10'	Red	Perennial, Deciduous, Sun to Part Shade, Moderate Water
<i>Eustoma exaltatum ssp. Russellianum</i>	Texas Bluebells	1'-3'	6"-12"	White, Pink, Purple, Yellow, Blue	Annual, Perennial, Biennial, Deciduous, Sun, Moderate Water

# PERENNIALS

Botanical Name	Common Name	Height	Spread	Fruit/Bloom	Notes
<i>Gaillardia pulchella</i>	Indian Blanket, Firewheel	1'-2'	6"-36"	Red, Yellow, Brown	Annual, Sun to Part Shade, Moderate Water
<i>Geum canadense</i>	White Avens	1'-4'	1'-2'	White	Perennial, Semi-Evergreen, Part Shade to Shade, Moderate Water
<i>Glandularia bipinnatifida</i> var. <i>bipinnatifida</i>	Purple Prairie Verbena	<2'	1'-2'	Pink, Purple	Annual, Perennial, Semi-Evergreen, Sun to Part Shade, Low Water
<i>Helenium amarum</i>	Bitterweed	<3'	10"-16"	Yellow	Annual, Part Shade, Low Water
<i>Helianthus maximiliani</i>	Maximilian Sunflower	3'-10'	2'-4'	Yellow, Brown	Perennial, Sun, Low Water
<i>Ipomopsis rubra</i>	Standing Cypress	2'-4'	18"-24"	Red, Orange	Biennial, Sun to Part Shade, Moderate Water
<i>Liatris elegans</i>	Pink-scale Gayfeather	1'-4'	12"-16"	Pink, Purple	Perennial, Sun, Low Water
<i>Liatris punctata</i> var. <i>mucronata</i>	Gayfeather	1'-3'	12"-18"	Pink, Purple	Perennial, Deciduous, Sun, Low Water
<i>Lobelia cardinalis</i>	Cardinal Flower	<6'	1'-2'	Red	Perennial, Sun to Shade, Moderate to High Water
<i>Lupinus texensis</i>	Texas Bluebonnet	6"-18"	1'-3'	White, Blue	Annual, Sun, Low Water
<i>Machaeranthera tanacetifolia</i>	Tahoka Daisy	<3'	6"-36"	Blue, Purple, Violet	Annual, Sun to Part Shade, Moderate Water
<i>Marshallia caespitosa</i>	Barbara's Buttons	8"-20"	6"-12"	White, Pink, Purple	Perennial, Sun to Part Shade, Low Water
<i>Melampodium leucanthum</i>	Blackfoot Daisy	6"-12"	12"-24"	Yellow, White	Perennial, Sun to Part Shade, Low Water
<i>Mirabilis latifolia</i>	Broadleaf Four O'clock	<3'	24"-42"	White, Pink, Violet	Perennial, Sun to Shade, Low Water
<i>Monarda citriodora</i>	Lemon Beebalm	1'-2'	8"-12"	White, Pink, Purple	Annual, Sun to Part Shade, Low Water
<i>Monarda fistulosa</i>	Bergomot, Beebalm	2'-5'	2'-3'	White, Pink, Purple	Perennial, Sun to Shade, Moderate Water
<i>Oenothera macrocarpa</i> ssp. <i>Macrocarpa</i>	Bigfruit Evening-primrose	<2'	12"-18"	Yellow	Perennial, Sun, Low Water
<i>Oenothera rhombipetala</i>	Diamond Petal Primrose	1'-3'	9"-18"	Yellow	Annual, Deciduous, Sun to Part Shade, Low Water
<i>Oenothera speciosa</i>	Pink Evening Primrose, Buttercups	1'-2'	1'-2'	White, Pink	Perennial, Semi-Evergreen, Sun, Low to Moderate Water
<i>Packera obovata</i>	Golden Groundsel	1'-2'	6"-12'	Yellow	Perennial, Evergreen / Semi-Evergreen, Part Shade to Shade, Low to Moderate Water
<i>Palafoxia callosa</i>	Small Palafox	<2'	4"-6"	White, Pink, Purple	Annual, Sun, Low Water
<i>Penstemon cobaea</i>	Prairie Penstemon, Wild Foxglove	<3'	12"-18"	White, Pink, Purple, Violet	Perennial, Sun to Part Shade, Moderate Water
<i>Penstemon tenuis</i>	Gulf Coast Penstemon	<30"	12"-18"	Purple, Violet	Perennial, Sun to Part Shade, Moderate Water
<i>Phlox drummondii</i>	Annual Phlox	6"-12"	1'-2'	White, Red, Pink, Purple	Annual, Sun to Part Shade, Low Water
<i>Phlox pilosa</i>	Fragrant Phlox	1'-2'	1'-2'	White, Pink, Purple	Perennial, Sun to Part Shade, Low Water
<i>Phyla nodiflora</i>	Frogfruit	<6"	2'-3'	White, Red, Pink	Perennial, Semi-Evergreen, Sun to Part Shade, Low to Moderate Water
<i>Physostegia pulchella</i>	Showy False Dragonhead	<3'	2'-3'	Pink, Purple	Perennial, Part Shade, Moderate Water
<i>Physostegia virginiana</i>	Fall Obedient Plant	<5'	2'-3'	White, Pink, Purple	Perennial, Sun to Shade, Moderate Water
<i>Polygala alba</i>	White Milkwort	<20"	1'-2'	White	Perennial, Part Shade, Low Water
<i>Ratibida columnifera</i>	Mexican Hat	<3'	1'-2'	Orange, Yellow, Brown	Perennial, Deciduous, Sun, Moderate Water



# PERENNIALS

Botanical Name	Common Name	Height	Spread	Fruit/Bloom	Notes
<i>Rivina humilis</i>	Pigeon Berry	1'-3'	1'-2'	White, Pink, Red, Orange	Perennial, Deciduous, Part Shade, Moderate Water
<i>Rudbeckia hirta</i>	Black-eyed Susan	1'-2'	1'-2'	Red, Orange, Yellow	Annual, Biennial, Perennial, Sun, Moderate Water
<i>Ruellia caroliniensis</i>	Ruellia, Wild Petunia	2'-3'	1'-2'	Pink, Purple	Perennial, Part Shade, Low Water
<i>Salvia azurea</i>	Pitcher Sage	<5'	2'-4'	White, Blue	Perennial, Part Shade, Low Water
<i>Salvia coccinea</i>	Scarlet Sage	<30"	<30"	White, Red, Pink	Annual, Perennial, Sun to Shade, Moderate Water
<i>Salvia engelmannii</i>	Engleman Sage	<18"	12"-18"	White, Blue, Purple	Perennial, Sun to Part Shade, Low Water
<i>Salvia farinacea</i>	Mealy Blue Sage	<3'	1'-2'	White, Blue	Perennial, Sun, Low Water
<i>Salvia pentstemonoides</i>	Big Red Sage	<4'	1'-2'	Red	Perennial, Semi-Evergreen, Sun to Part Shade, Moderate Water
<i>Salvia roemeriana</i>	Cedar Sage	1'-2'	12"	Red	Perennial, Part Shade, Low Water
<i>Scutellaria drummondii</i>	Drummond's Skullcap	<12"	9"-12"	White, Purple, Violet	Annual, Sun, Low Water
<i>Senegalia wrightii</i>	Wright Acacia	10'-30'	<35'	White, Yellow	Perennial, Deciduous, Semi-Evergreen, Sun to Part Shade, Low Water
<i>Tetaneuris scaposa</i>	Four-Nerve Daisy	6"-12"	12"	Yellow	Perennial, Part Shade, Low Water
<i>Thelesperma filifolium</i>	Greenthread	12"-30"	1'-2'	Yellow	Annual, Sun, Low Water
<i>Tradescantia occidentalis</i>	Spiderwort	<3'	18"-30"	Pink, Blue, Purple, Violet	Perennial, Sun to Part Shade, Low Water
<i>Verbesina encelioides</i>	Cowpen Daisy	<4'	<36"	Yellow	Annual, Sun, Low Water
<i>Vernonia baldwinii</i>	Western Ironweed	3'-5'	12"-18"	Pink, Purple	Perennial, Sun, Low Water
<i>Viola missouriensis</i>	Missouri Violet	<6"	6"-8"	White, Purple	Annual, Perennial, Semi-Evergreen, Part Shade to Shade, Moderate Water
<i>Wedelia acapulcensis var. hispida</i>	Zexmenia	<3'	30"	Yellow, Orange	Perennial, Sun to Part Shade, Low Water

## GRASSES

Botanical Name	Common Name	Height	Spread	Fruit/Bloom	Notes
<i>Andropogon gerardii</i>	Big Bluestem	4'-8'	2'-3'	Red, Blue, Brown	Perennial, Full Sun to Part Shade, Low Water
<i>Andropogon glomeratus</i>	Bushy Bluestem	2'-5'	1'-3'	White, Brown	Perennial, Deciduous, Full Sun, High Water
<i>Andropogon ternarius</i>	Splitbeard Bluestem	2'-4'	1'-2'	Brown	Perennial, Sun to Part Shade, Low Water
<i>Bouteloua curtipendula</i>	Sideoats Grama	2'-3'	18"-24"	Red, Orange, Yellow	Perennial, Full Sun to Part Shade, Moderate Water *State Grass of Texas
<i>Bouteloua dactyloides</i>	Buffalograss	3"-12"	6"-12"	Yellow	Perennial, Semi-Evergreen, Full Sun, Low to Moderate Water
<i>Bouteloua gracilis</i>	Blue Grama	1'-2'	6"-12"	Yellow	Perennial, Deciduous, Full Sun, Low Water
<i>Chasmanthium latifolium</i>	Inland Sea Oats	2'-4'	1'-2'	Green	Perennial, Deciduous, Part Shade to Shade, Moderate Water
<i>Hilaria belangeri var. belangeri</i>	Curly-mesquite	6"-12"	6"-12"	White	Perennial, Sun, Low Water
<i>Leptochloa dubia</i>	Green Sprangletop	2'-3'	6"-12"	Yellow	Perennial, Part Shade, Moderate Water
<i>Muhlenbergia capillaris</i>	Gulf Muhly	2'-3'	2'-3'	Pink, Purple	Perennial, Sun, Low to Moderate Water
<i>Muhlenbergia lindheimeri</i>	Lindheimer's Muhly, Big Muhly	2'-5'	3'-4'	White	Perennial, Semi-Evergreen, Sun, Moderate Water
<i>Muhlenbergia reverchonii</i>	Seep Muhly	1'-3'	18"-24"	White, Pink, Brown	Perennial, Sun, Moderate Water
<i>Panicum virgatum</i>	Switchgrass	3'-10'	2'-3'	Green, Brown	Perennial, Sun To Part Shade, Moderate Water
<i>Poa arachnifera</i>	Texas Bluegrass	1'-3'	1'-2'	White, Green, Brown	Perennial, Sun To Part Shade, Moderate Water
<i>Schizachyrium scoparium</i>	Little Bluestem	2'-5'	1'-3'	White, Green, Brown	Perennial, Sun To Part Shade, Low Water
<i>Sorghastrum nutans</i>	Indiangrass	3'-8'	1'-2'	Yellow	Perennial, Sun to Shade, Moderate Water
<i>Tripsacum dactyloides</i>	Eastern Gamagrass	2'-3'	1'-2'	Brown	Perennial, Evergreen, Part Shade, High Water

## CACTUS & SUCCULENTS

Botanical Name	Common Name	Height	Spread	Fruit/Bloom	Notes
<i>Hesperaloe parviflora</i>	Red Yucca	2'-5'	4'-6'	Red, Yellow	Perennial, Evergreen, Sun, Low Water
<i>Yucca pallida</i>	Pale Leaf Yucca	2'-6'	2'-3'	White	Perennial, Evergreen, Sun to Part Shade, Low Water
<i>Yucca rupicola</i>	Twistleaf Yucca	2'-6'	2'-3'	White, Green	Perennial, Evergreen, Sun to Part Shade, Low Water

## FERNS

Botanical Name	Common Name	Height	Spread	Fruit/Bloom	Notes
<i>Thelypteris kunthii</i>	Wood Fern	2'-3'	3'-6'	Spores	Perennial, Semi-Evergreen, Part Shade to Shade, Moderate Water

# VINES

Botanical Name	Common Name	Height	Spread	Fruit/Bloom	Notes
<i>Bignonia capreolata</i>	Crossvine	<50' long	6'-9'	Red, Yellow	Perennial, Evergreen, Full Sun to Part Shade, Low to Moderate Water
<i>Campsis radicans</i>	Trumpet Creeper, Trumpet Vine	<35' long	5'-10'	Red, Orange, Yellow	Perennial, Deciduous, Sun, Low Water
<i>Clematis pitcheri</i>	Purple Clematis, Pitcher's Clematis	<12' long	2'-4'	Purple	Perennial, Deciduous, Sun to Part Shade, Moderate Water
<i>Gelsemium sempervirens</i>	Carolina Jessamine	<20'	3'-6'	Yellow	Perennial, Evergreen, Sun to Part Shade, Moderate Water, Poisonous
<i>Lonicera albiflora</i>	Texas Honeysuckle, White Honeysuckle	4'-10'	3'-6'	White	Perennial, Deciduous, Sun to Part Shade, Low Water
<i>Lonicera sempervirens</i>	Coral Honeysuckle	<20' long	3'-6'	Red, Yellow	Perennial, Evergreen, Sun to Part Shade, Moderate Water
<i>Parthenocissus quinquefolia</i>	Virginia Creeper	<40' long	5'-10'	White, Green	Perennial, Deciduous, Sun to Shade, Low Water
<i>Passiflora incarnata</i>	Purple Passionflower	<25' long	6'-8'	Pink, Blue, Purple	Perennial, Deciduous, Sun to Part Shade, Low to Moderate Water

# RESOURCES

Links to relevant resources and native nurseries

Botanical Research Institute of Texas

<https://fwbg.org/>

Lady Bird Johnson Wildflower Center, Plant List & Collections -

<https://www.wildflower.org/collections/>

Native Plant Society of Texas -

<https://www.npsot.org/>

EcoBlossom Nursery

<https://ecoblossom.com/>

Native Gardeners

<https://nativegardeners.com/>

North Haven Gardens - Dallas, Texas

<https://www.nhg.com/>

Redenta's - Dallas, Texas

<https://redentas.com/>

Ruibal's Plants of Texas

<https://ruibals.com>

## INDEX

Annual - A species that grows from seed, produces flowers or fruit, then dies within one year's time.

Biennial - A plant that takes two years to complete the flowering cycle.

Deciduous - When a plants leaves fall off or wither up at the end of a growing season.

Evergreen - A plant that retains green leaves year round.

Grass - Having narrow leaves, usually rising from the base of a plant.

Herb - A plant lacking woody tissue when mature.

Perennial - A plant with a normal life cycle exceeding two years.

Semi-Evergreen - Having foliage during part of the winter or dry season, or tending to be evergreen in a mild climate, but deciduous in a rigorous climate.

Shrub - A low growing, usually less than 15' in height, woody perennial plant without a central stem.

Subshrub - Shorter than a shrub, often weakly woody and persisting for only a few years,

Vine - Plants that climb by twining, tendrils, or clinging to other plants or structures.